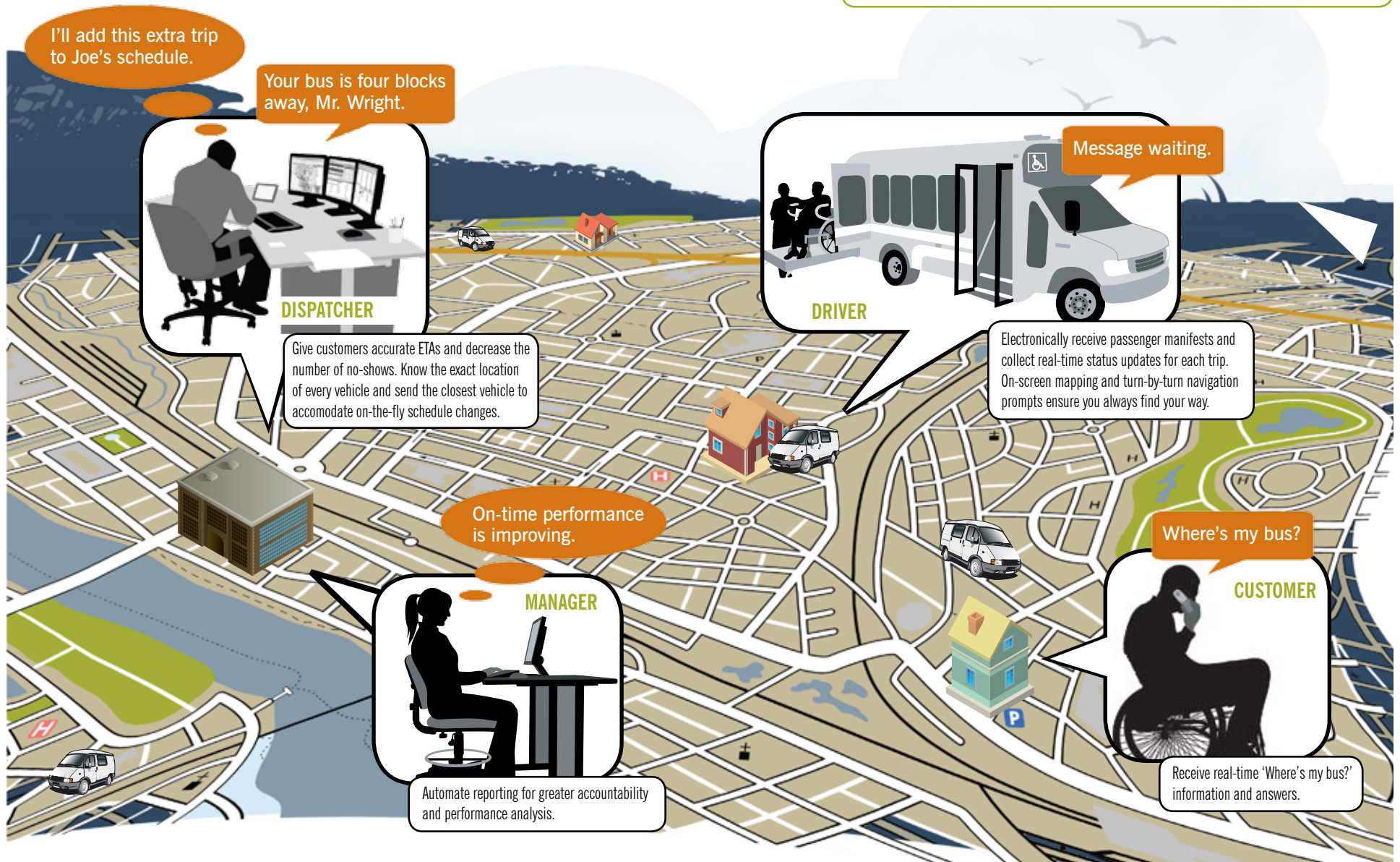


# Paratransit ITS Solutions

## What is a Paratransit ITS Solution?

Intelligent Transportation Systems (ITS) technologies are revolutionizing the way Paratransit agencies approach fleet management demands with effective and flexible service strategies. By adding mobile computing technology to fleet vehicles and transport infrastructure, an ITS solution streamlines the way organizations operate.



# ITS Solutions for *Improved* Paratransit Operations

From providing managers with accurate mileage reporting to giving dispatchers the tools to quickly and easily make real-time schedule changes, a Mentor ITS solution is about the power of information. Mentor Engineering's technologies are compatible with every major routing and scheduling system, giving you the ability to better manage data and resources, and allowing you to take the pulse of your organization at any given moment.



## For Drivers

- Electronic manifests sent directly to each vehicle
- Automated data collection eliminates the need for manual data entry
- In-vehicle navigation with turn-by-turn prompts
- Real-time communication between drivers and dispatchers
- Hands-free voice calling removes the need for radios



## For Passengers

- Improved on-time service
- Last minute schedule changes and trip requests can be accommodated
- Automated phone calls give passengers time to get ready
- AVL data ensures accurate answers to 'Where's my bus?' questions



## For Dispatchers

- Easily re-assign trips in real-time based on last minute changes or unexpected incidents
- Always know the location and real-time status of each vehicle to better handle ad hoc passenger demand and 'will calls'
- Quickly locate customer addresses and destinations to provide accurate schedule information
- Send canned and free text messages to an individual or group of drivers, resulting in a much quieter work environment and greatly enhanced dispatcher/driver communication
- Automated system frees up dispatcher time resulting in better customer service



## For Maintenance Personnel

- Automatically collect real-time data from vehicles to expedite repair requirements



## For Managers

- Real-time accurate data for informed decision making
- Historical data to assist in reviewing passenger complaints
- Increased efficiency allows for more trips without additional vehicles
- Fuel usage monitoring tracks excessive fuel usage behaviours such as idling and speeding to reduce costs

## Why Mentor?

Mentor Engineering has developed complete ITS solutions that are ideally suited to the demands of the paratransit industry. Mentor's staff understand the complexities of transit organizations and know what it takes to deploy a high-tech system in this environment. Fully committed to the needs of this dynamic industry, continuous investment in research and development ensures that Mentor offers cutting edge technologies, unparalleled integration expertise and proven implementation capability.

