

**Service Monitoring Report  
Marin County Transit District  
January 2009**

Note: Costs do not include Marin Transit administration costs

# Marin Transit

## Monthly Monitoring Report

# January 2009

Fixed Route	January								Jan-08			Fiscal Year to Date			
	Patrons	Fares	Contract Expenses	Miles	Hours	Pax/Hour	Farebox Recovery	Subsidy/Pax	Pax/Hour	Farebox Recovery	Subsidy/Pax	Patrons	Pax/Hour	Farebox Recovery	Subsidy/Pax
Local Service (GGT) <sup>1</sup>	264,079	\$266,078	\$1,251,686	144,728	10,550	25.0	21.3%	\$3.73	25.3	23.2%	\$3.42	1,939,231	27.6	24.3%	\$3.20
Stage	3,895	\$4,560	\$50,880	14,720	824	4.7	9.0%	\$11.89	4.0	9.8%	\$11.74	33,865	5.5	10.7%	\$10.24
Shuttles	3,670	3,017	33,857	8,442	588	6.2	8.9%	\$8.40	5.4	8.6%	\$10.05	25,356	6.3	8.5%	\$9.34
<b>Total</b>	<b>271,644</b>	<b>\$273,655</b>	<b>\$1,336,423</b>	<b>167,890</b>	<b>11,962</b>	<b>22.7</b>	<b>20.5%</b>	<b>\$3.91</b>	<b>22.8</b>	<b>22.3%</b>	<b>\$3.60</b>	<b>1,998,452</b>	<b>24.8</b>	<b>23.3%</b>	<b>\$3.40</b>

Demand Responsive	January								Jan-08			Fiscal Year to Date			
	Patrons	Fares	Contract Expenses	Miles	Hours	Pax/Hour	Farebox Recovery	Subsidy/Pax	Pax/Hour	Farebox Recovery	Subsidy/Pax	Patrons	Pax/Hour	Farebox Recovery	Subsidy/Pax
Paratransit (local)	8,082	\$15,040	\$236,962	60,653	3,812	2.1	6.3%	\$27.46	2.1	6.3%	\$28.38	59,135	2.2	6.6%	\$26.24
EZ Rider	335	\$463	\$9,667	1923	168	2.0	4.8%	\$27.48	2.0	5.2%	\$27.82	2,338	1.9	4.6%	\$27.93
Muir Beach DAR	91	\$102	\$2,167	874	52	1.8	4.7%	\$22.69	0.0	0.0%	\$0.00	680	1.4	4.1%	\$30.01

### Notes

1. Fares include an estimated \$7741 per month in youth pass sales

# Marin Transit

Monthly Monitoring Report  
Fixed Route Detail Report

January 2009

Route	January					Previous Month			Fiscal Year to Date		
	Patrons	Service Hours	Pax/Hour	Farebox Recovery	Subsidy	Pax/Hour	Farebox Recovery	Subsidy	Pax/Hour	Farebox Recovery	Subsidy
17	19,733	1,061.4	18.6	17.3%	\$5.12	19.8	18.2%	\$4.73	26.0	22.7%	\$3.38
19	6,280	552.3	11.4	9.8%	\$8.86	11.7	10.1%	\$8.56	13.2	11.1%	\$7.52
22	28,475	1,578.1	18.0	16.2%	\$5.42	17.5	15.0%	\$5.65	19.8	17.6%	\$4.85
23	17,173	1,147.5	15.0	13.6%	\$6.50	15.6	13.8%	\$6.21	16.4	14.7%	\$5.87
29	17,861	899.8	19.8	19.2%	\$4.75	20.3	21.5%	\$4.45	23.4	24.7%	\$3.67
35	61,498	815.9	75.4	63.7%	\$0.56	76.0	65.2%	\$0.53	86.2	74.5%	\$0.34
36	11,432	354.6	32.2	27.8%	\$2.65	30.2	30.9%	\$2.71	34.0	35.2%	\$2.27
45	19,594	768.5	25.5	19.3%	\$3.57	25.8	20.7%	\$3.47	28.8	22.9%	\$3.02
49	13,821	804.5	17.2	14.1%	\$5.59	18.2	14.7%	\$5.23	18.9	15.6%	\$4.98
51	7,502	584.7	12.8	10.6%	\$7.78	12.8	11.8%	\$7.73	13.4	11.9%	\$7.34
52	9,482	729.6	13.0	11.5%	\$7.79	12.4	12.3%	\$8.06	13.6	13.6%	\$7.26
71	23,455	875.7	26.8	27.7%	\$3.39	25.3	24.8%	\$3.70	27.4	27.2%	\$3.28
<b>Total</b>	<b>236,306</b>	<b>10,173</b>	<b>23.2</b>	<b>20.7%</b>	<b>\$3.94</b>	<b>23.4</b>	<b>21.1%</b>	<b>\$3.88</b>	<b>26.2</b>	<b>23.9%</b>	<b>\$3.32</b>

Not meeting target of 20 passengers per hour

## Shuttles

Route	January					Previous Month			Fiscal Year to Date		
	Patrons	Hours	Pax/ Hour	Farebox Recovery	Subsidy	Pax/ Hour	Farebox Recovery	Subsidy	Pax/Hour	Farebox Recovery	Subsidy
221	490	147	3.3	2.7%	\$16.80	2.8	2.5%	\$21.75	3.1	2.1%	\$20.00
233	2,411	252	9.6	14.5%	\$5.15	8.8	14.3%	\$5.93	10.0	10.9%	\$5.50
259	769	189	4.1	6.3%	\$13.26	4.0	6.7%	\$14.75	4.3	5.1%	\$14.15
<b>Total</b>	<b>3,670</b>	<b>588</b>	<b>6.2</b>	<b>8.9%</b>	<b>\$8.40</b>	<b>5.8</b>	<b>8.9%</b>	<b>\$9.81</b>	<b>6.3</b>	<b>6.5%</b>	<b>\$9.55</b>

Not meeting target of 7 passengers per hour

Note: Fuel expenses for shuttles are estimates

Route	January					Previous Month			Fiscal Year to Date		
	Patrons	Hours	Pax/Hour	Farebox Recovery	Subsidy	Pax/Hour	Farebox Recovery	Subsidy	Pax/Hour	Farebox Recovery	Subsidy
61	1,776	335	5.3	10.3%	\$10.11	3.9	8.9%	\$14.48	5.9	9.7%	\$9.29
62	211	111	1.9	4.2%	\$29.98	2.3	5.4%	\$25.67	2.5	3.8%	\$24.47
68	1,908	378	5.0	9.8%	\$10.68	5.5	11.2%	\$10.02	5.8	8.6%	\$9.78
<b>Total</b>	<b>3,895</b>	<b>824</b>	<b>4.7</b>	<b>9.0%</b>	<b>\$11.89</b>	<b>4.4</b>	<b>9.5%</b>	<b>\$12.69</b>	<b>5.5</b>	<b>8.4%</b>	<b>\$10.51</b>

Not meeting target of 4 passengers per hour

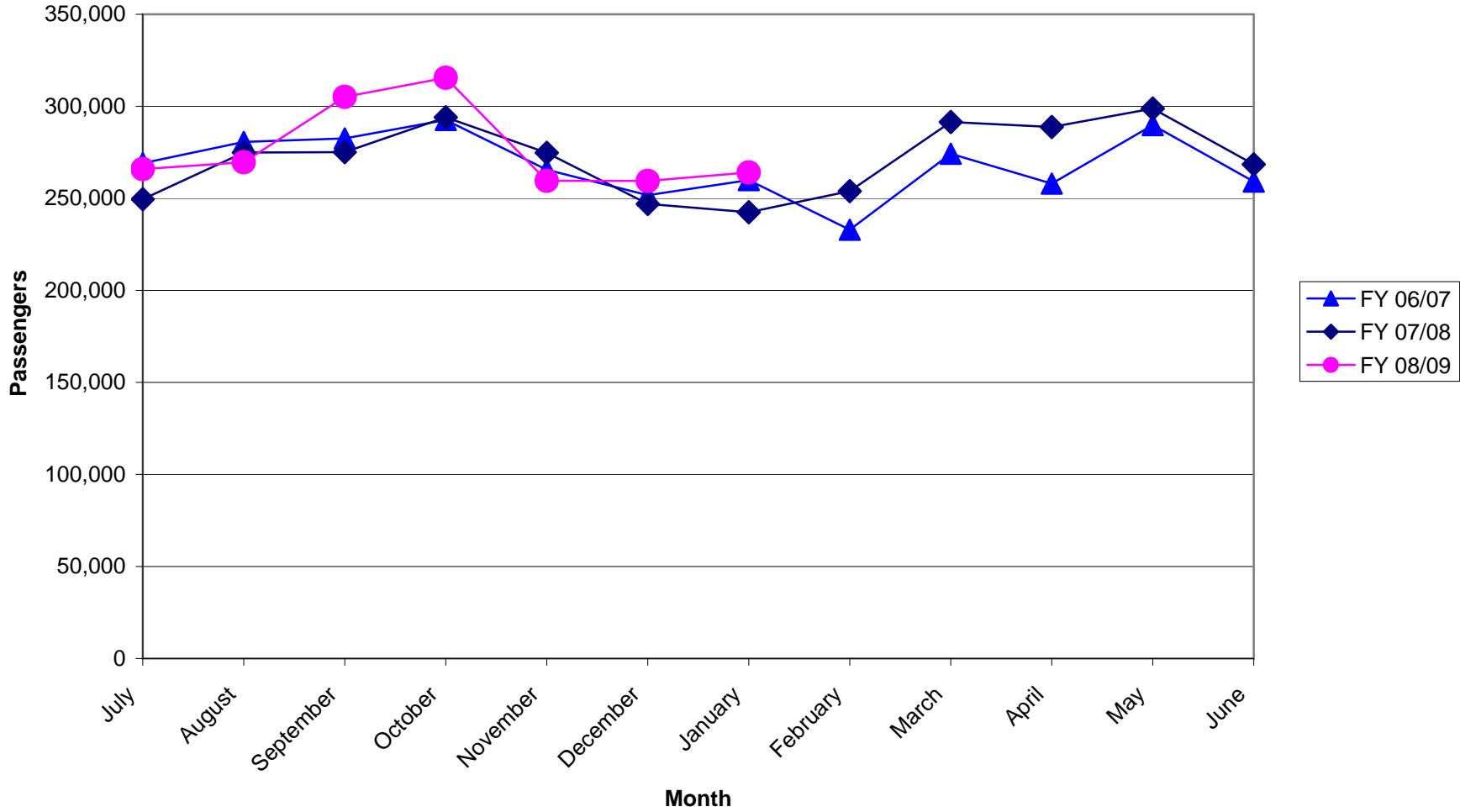
Route	January					Previous Month			Fiscal Year To Date		
	Patrons	Trips	Pax/ Trip	Farebox Recovery	Subsidy	Pax/Trip	Farebox Recovery	Subsidy	Pax/ Trip	Farebox Recovery	Subsidy
107	1,002	38.0	26.4	16.9%	\$3.96	29.5	17.5%	\$3.97	30.1	17.1%	\$3.95
113	1,348	54.0	25.0	22.5%	\$2.27	21.2	17.9%	\$2.88	24.5	21.3%	\$2.36
115	1,854	54.0	34.3	25.1%	\$2.05	36.4	27.1%	\$1.88	34.5	27.4%	\$2.00
117	3,741	72.0	52.0	25.0%	\$1.35	47.9	24.5%	\$1.47	48.1	17.6%	\$1.64
123	8,237	252.0	32.7	16.1%	\$2.51	31.8	17.3%	\$2.48	32.4	17.3%	\$2.41
125	1,084	18.0	60.2	64.6%	\$0.47	32.4	35.7%	\$1.60	43.7	46.0%	\$0.99
126	2,862	116.0	24.7	31.5%	\$1.77	32.3	40.7%	\$1.24	26.6	33.7%	\$1.59
127	3,749	126.0	29.8	12.9%	\$3.03	33.2	12.9%	\$2.73	33.1	13.8%	\$2.70
139	1,280	36.0	35.6	25.2%	\$1.97	29.0	20.0%	\$2.95	31.0	21.3%	\$2.76
143	786	36.0	21.8	6.6%	\$3.35	26.3	7.0%	\$2.76	25.9	8.9%	\$2.75
145	791	18.0	43.9	22.6%	\$1.31	42.9	20.0%	\$1.39	49.9	27.3%	\$1.09
153 <sup>1</sup>	1,039	36.0	28.9	18.3%	\$2.42	22.2	14.3%	\$3.30	28.0	20.3%	\$2.42
<b>Total</b>	<b>27,773</b>	<b>860</b>	<b>32.3</b>	<b>19.9%</b>	<b>\$2.24</b>	<b>32.5</b>	<b>20.1%</b>	<b>\$2.26</b>	<b>32.6</b>	<b>19.8%</b>	<b>\$2.24</b>

Not meeting target of 20 passengers per trip

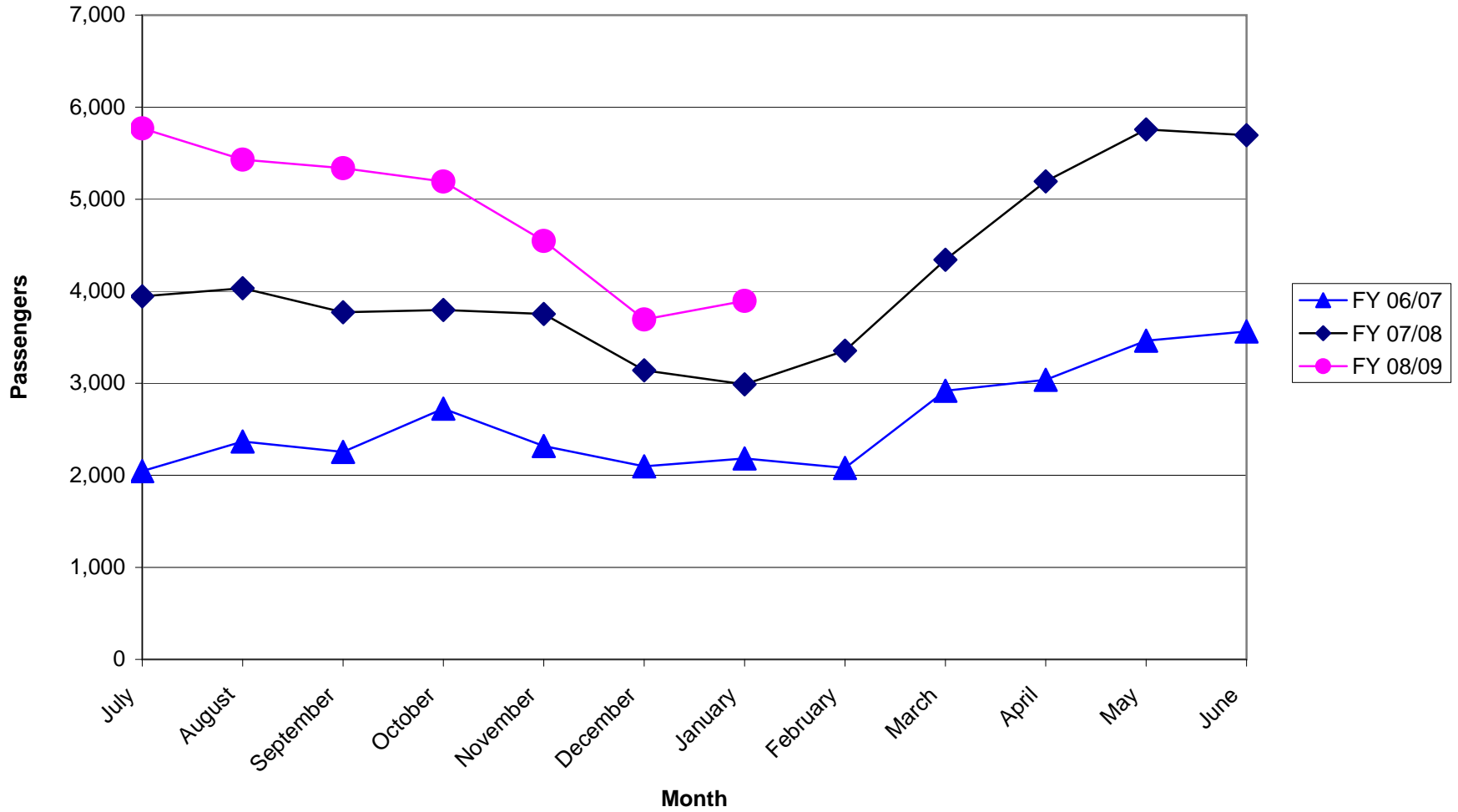
Notes:

1. Number of Route 153 trips reduced to eliminate deadhead trips from productivity calculation.

**Local Transit Operated By Golden Gate  
Monthly Passengers  
Fiscal Years 06/07, 07/08, 08/09**



**Stagecoach Passengers**  
**Fiscal Years 06/07, 07/08, 08/09**



### Community Shuttle Passengers Fiscal Years 06/07, 07/08, 08/09

