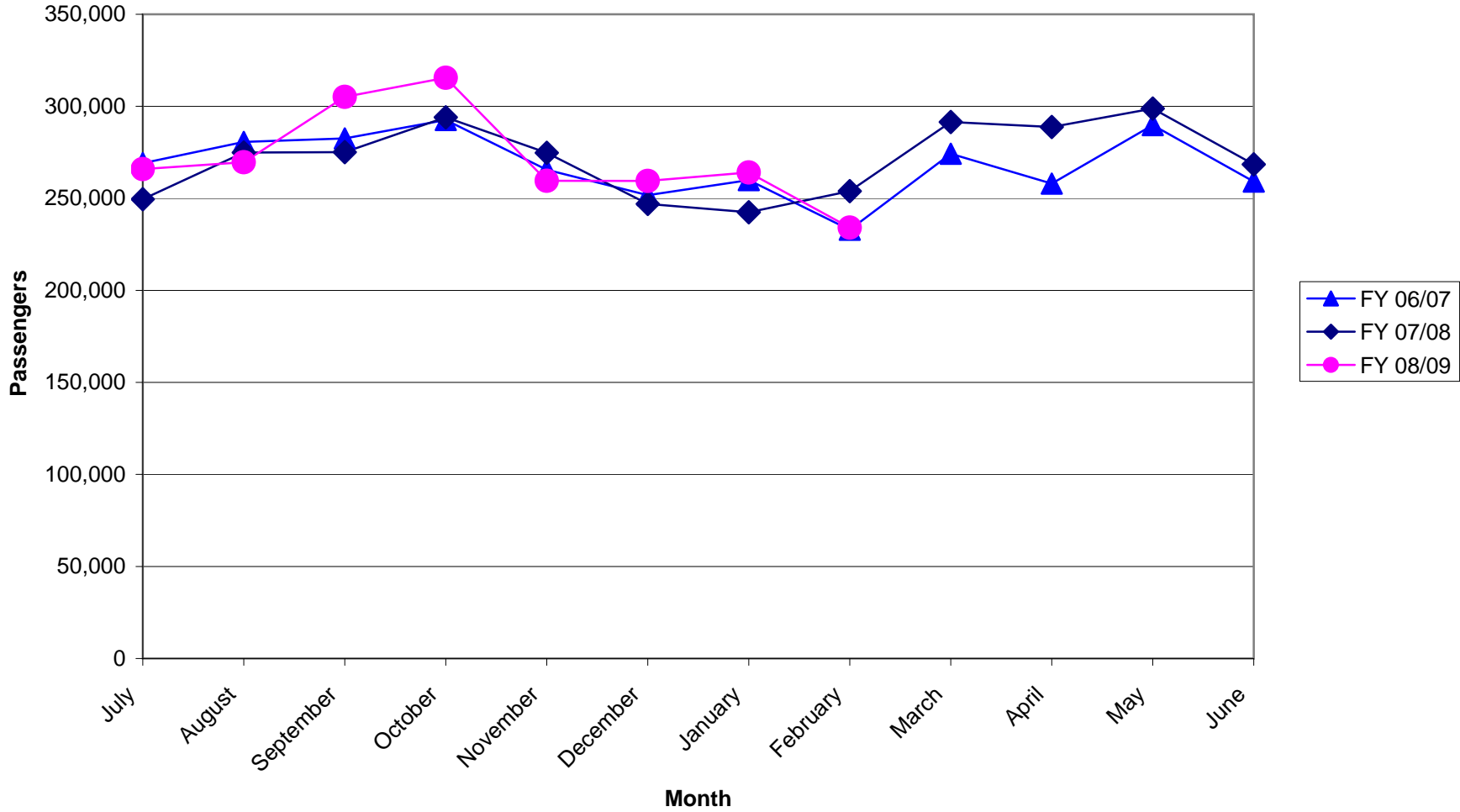


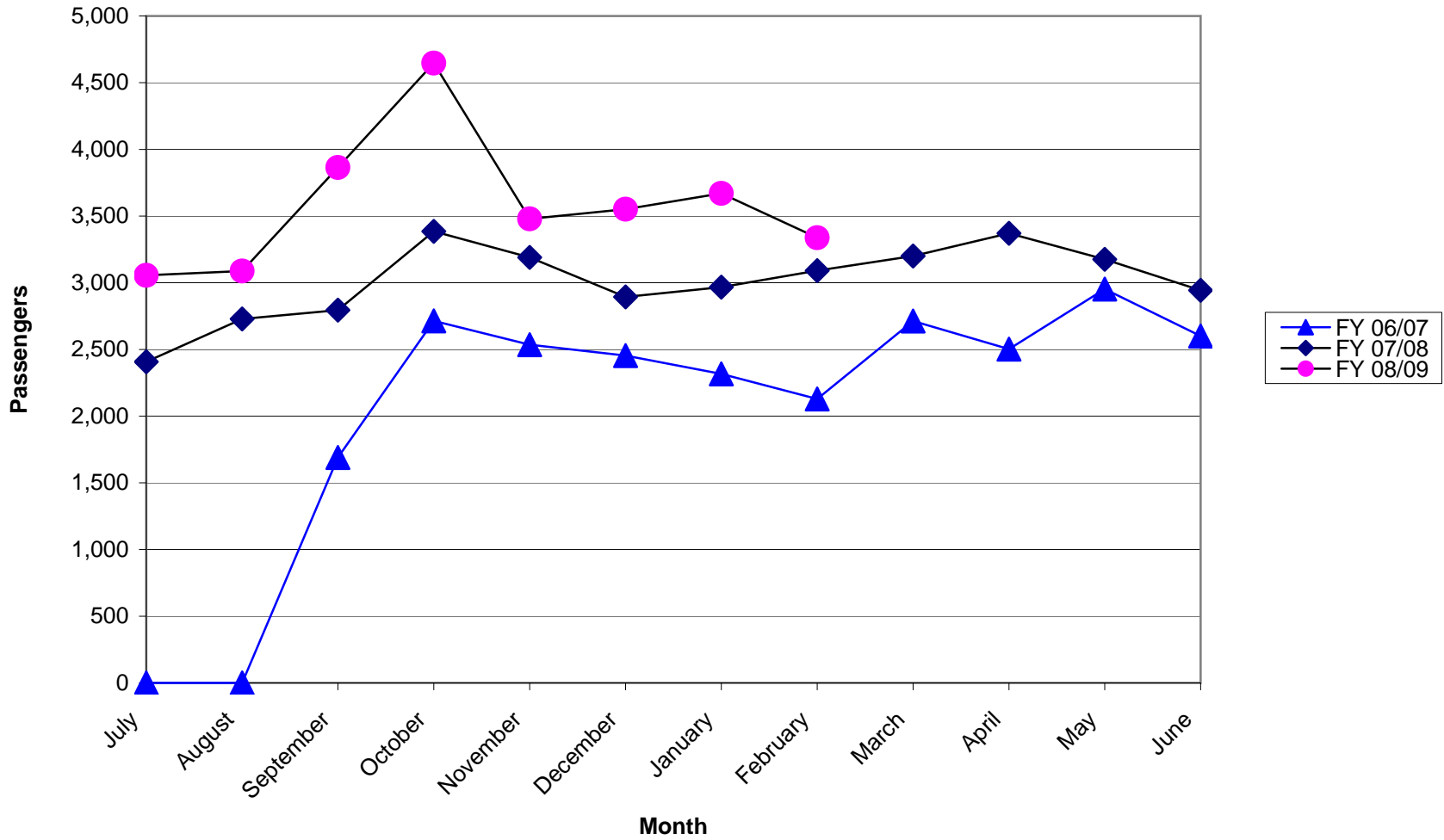
Service Monitoring Report
Marin County Transit District
February 2009

Note: Costs do not include Marin Transit administration costs

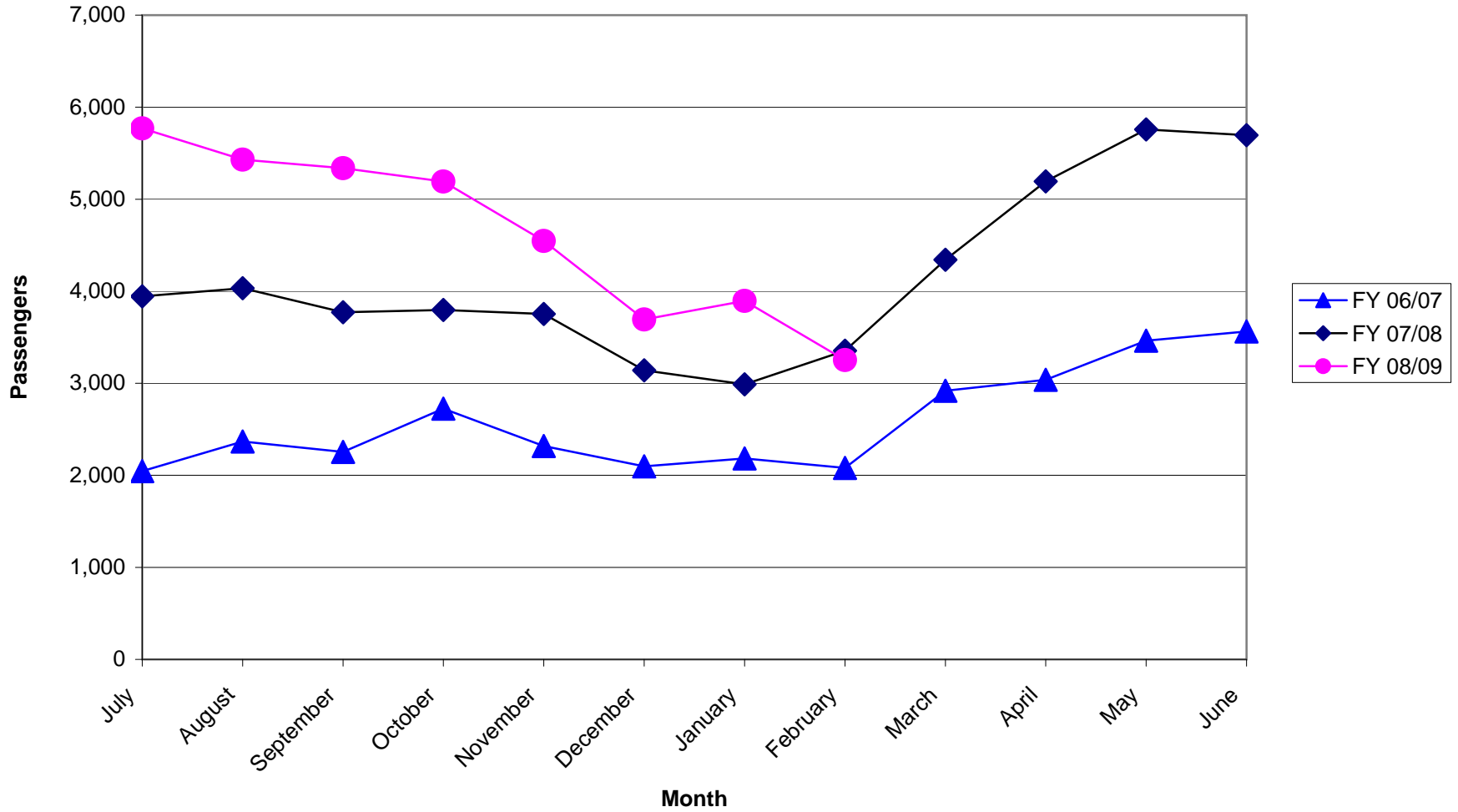
**Local Transit Operated By Golden Gate
Monthly Passengers
Fiscal Years 06/07, 07/08, 08/09**



Community Shuttle Passengers Fiscal Years 06/07, 07/08, 08/09



Stagecoach Passengers
Fiscal Years 06/07, 07/08, 08/09



Marin Transit
Monthly Monitoring Report

February 2009

Fixed Route	February								Feb-08			Fiscal Year to Date			
	Service	Patrons	Fares	Contract Expenses	Miles	Hours	Pax/Hour	Farebox Recovery	Subsidy/Pax	Pax/Hour	Farebox Recovery	Subsidy/Pax	Patrons	Pax/Hour	Farebox Recovery
Local Service (GGT) ¹	234,123	\$241,100	\$1,124,240	129,915	9,492	24.7	21.4%	\$3.77	28.1	25.6%	\$2.99	2,173,354	27.2	24.0%	\$3.27
Stage	3,252	\$4,088	\$46,401	13,718	768	4.2	8.8%	\$13.01	4.6	9.9%	\$10.40	37,117	5.3	10.7%	\$10.46
Shuttles	3,338	\$3,026	\$30,633	7,638	532	6.3	9.9%	\$8.27	6.2	9.6%	\$8.55	28,694	6.3	9.3%	\$9.15
Total	240,713	\$248,214	\$1,201,274	151,271	10,791	22.3	20.7%	\$3.96	25.3	24.6%	\$3.15	2,239,165	24.5	23.0%	\$3.46

Demand Responsive	February								Feb-08			Fiscal Year to Date			
	Service	Patrons	Fares	Contract Expenses	Miles	Hours	Pax/Hour	Farebox Recovery	Subsidy/Pax	Pax/Hour	Farebox Recovery	Subsidy/Pax	Patrons	Pax/Hour	Farebox Recovery
Paratransit (local)	7,392	\$13,843	\$225,815	56,080	3,500	2.1	6.1%	\$28.68	2.2	6.6%	\$26.06	66,527	2.2	6.5%	\$26.51
EZ Rider	308	\$436	\$8,731	1696	152	2.0	5.0%	\$26.93	2.0	5.3%	\$26.86	2,646	2.0	4.7%	\$27.82
Muir Beach DAR	82	\$93	\$2,097	827	50	1.6	4.4%	\$24.44	0.0	0.0%	\$0.00	762	1.4	4.1%	\$29.41

Notes

Marin Transit

Monthly Monitoring Report
Fixed Route Detail Report

February 2009

Route	February					Previous Month			Fiscal Year to Date		
	Patrons	Service Hours	Pax/Hour	Farebox Recovery	Subsidy	Pax/Hour	Farebox Recovery	Subsidy	Pax/Hour	Farebox Recovery	Subsidy
17	16,837	957	17.6	17.0%	\$5.44	18.6	17.3%	\$5.12	24.8	21.9%	\$3.59
19	6,145	498	12.3	11.1%	\$8.06	11.4	9.8%	\$8.86	13.1	11.1%	\$7.58
22	27,442	1,425	19.3	17.6%	\$5.00	18.0	16.2%	\$5.42	19.7	17.6%	\$4.86
23	16,027	1,036	15.5	14.2%	\$6.24	15.0	13.6%	\$6.50	16.3	14.7%	\$5.91
29	16,367	802	20.4	19.8%	\$4.59	19.8	19.2%	\$4.75	23.0	24.0%	\$3.78
35	54,331	737	73.7	64.1%	\$0.56	75.4	63.7%	\$0.56	84.7	73.3%	\$0.36
36	9,374	321	29.2	26.1%	\$2.98	32.2	27.8%	\$2.65	33.5	34.3%	\$2.33
45	17,825	694	25.7	20.4%	\$3.50	25.5	19.3%	\$3.57	28.4	22.6%	\$3.07
49	12,521	726	17.2	13.3%	\$5.62	17.2	14.1%	\$5.59	18.7	15.4%	\$5.05
51	7,004	530	13.2	10.7%	\$7.55	12.8	10.6%	\$7.78	13.4	11.8%	\$7.36
52	8,151	659	12.4	11.9%	\$8.14	13.0	11.5%	\$7.79	13.5	13.4%	\$7.36
71	20,379	790	25.8	26.1%	\$3.59	26.8	27.7%	\$3.39	27.2	27.1%	\$3.32
Total	212,403	9,174	23.2	20.9%	\$3.94	23.2	20.7%	\$3.94	25.8	23.5%	\$3.38

Not meeting target of 20 passengers per hour

Shuttles

Route	February					Previous Month			Fiscal Year to Date		
	Patrons	Hours	Pax/ Hour	Farebox Recovery	Subsidy	Pax/ Hour	Farebox Recovery	Subsidy	Pax/Hour	Farebox Recovery	Subsidy
221	474	133	3.6	3.6%	\$15.57	3.3	3.2%	\$16.72	3.2	3.0%	\$19.29
233	2,099	228	9.2	15.3%	\$5.30	9.6	16.3%	\$5.04	9.9	15.5%	\$5.23
259	765	171	4.5	7.6%	\$11.90	4.1	6.6%	\$13.21	4.4	7.2%	\$13.62
Total	3,338	532	6.3	9.9%	\$8.27	6.2	9.9%	\$8.31	6.3	9.3%	\$9.15

Note: Fuel expenses for shuttles are esti Not meeting target of 7 passengers per hour

Route	February					Previous Month			Fiscal Year to Date		
	Patrons	Hours	Pax/Hour	Farebox Recovery	Subsidy	Pax/Hour	Farebox Recovery	Subsidy	Pax/Hour	Farebox Recovery	Subsidy
61	1,118	313	3.6	8.3%	\$15.33	5.3	10.5%	\$10.09	5.7	11.8%	\$9.44
62	221	102	2.2	4.2%	\$26.42	1.9	4.5%	\$29.90	2.4	5.1%	\$24.35
68	1,913	353	5.4	10.8%	\$9.83	5.0	10.1%	\$10.65	5.8	11.6%	\$9.49
Total	3,252	768	4.2	8.8%	\$13.01	4.7	9.2%	\$11.86	5.3	10.7%	\$10.46

Not meeting target of 4 passengers per hour

Route	February					Previous Month			Fiscal Year To Date		
	Patrons	Trips	Pax/ Trip	Farebox Recovery	Subsidy	Pax/Trip	Farebox Recovery	Subsidy	Pax/ Trip	Farebox Recovery	Subsidy
107	883	38	23.2	15.7%	\$4.56	26.4	16.9%	\$3.96	29.0	16.9%	\$4.03
113	984	45	21.9	18.6%	\$2.72	25.0	22.5%	\$2.27	24.1	20.9%	\$2.40
115	1,220	45	27.1	17.8%	\$2.87	34.3	25.1%	\$2.05	33.5	26.1%	\$2.09
117	3,137	60	52.3	22.9%	\$1.37	52.0	25.0%	\$1.35	48.7	18.3%	\$1.61
123	7,146	210	34.0	16.7%	\$2.40	32.7	16.1%	\$2.51	32.6	17.2%	\$2.41
125	610	15	40.7	40.9%	\$1.21	60.2	64.6%	\$0.47	43.3	45.3%	\$1.02
126	2,099	96	21.9	25.9%	\$2.17	24.7	31.5%	\$1.77	26.0	32.7%	\$1.65
127	2,946	105	28.1	12.7%	\$3.22	29.8	12.9%	\$3.03	32.4	13.6%	\$2.76
139	833	30	27.8	22.4%	\$2.62	35.6	25.2%	\$1.97	30.6	21.4%	\$2.74
143	671	30	22.4	5.2%	\$3.32	21.8	6.6%	\$3.35	25.4	8.4%	\$2.81
145	464	15	30.9	15.6%	\$2.04	43.9	22.6%	\$1.31	47.2	25.7%	\$1.18
153 ¹	727	28	26.0	15.6%	\$2.78	28.9	18.3%	\$2.42	27.7	19.7%	\$2.46
Total	21,720	717	30.3	17.7%	\$2.48	32.3	19.9%	\$2.24	32.3	19.6%	\$2.27

Not meeting target of 20 passengers per trip

Notes:

- Number of Route 153 trips reduced to eliminate deadhead trips from productivity calculation.