

**Service Monitoring Report
Marin County Transit District
March 2008**

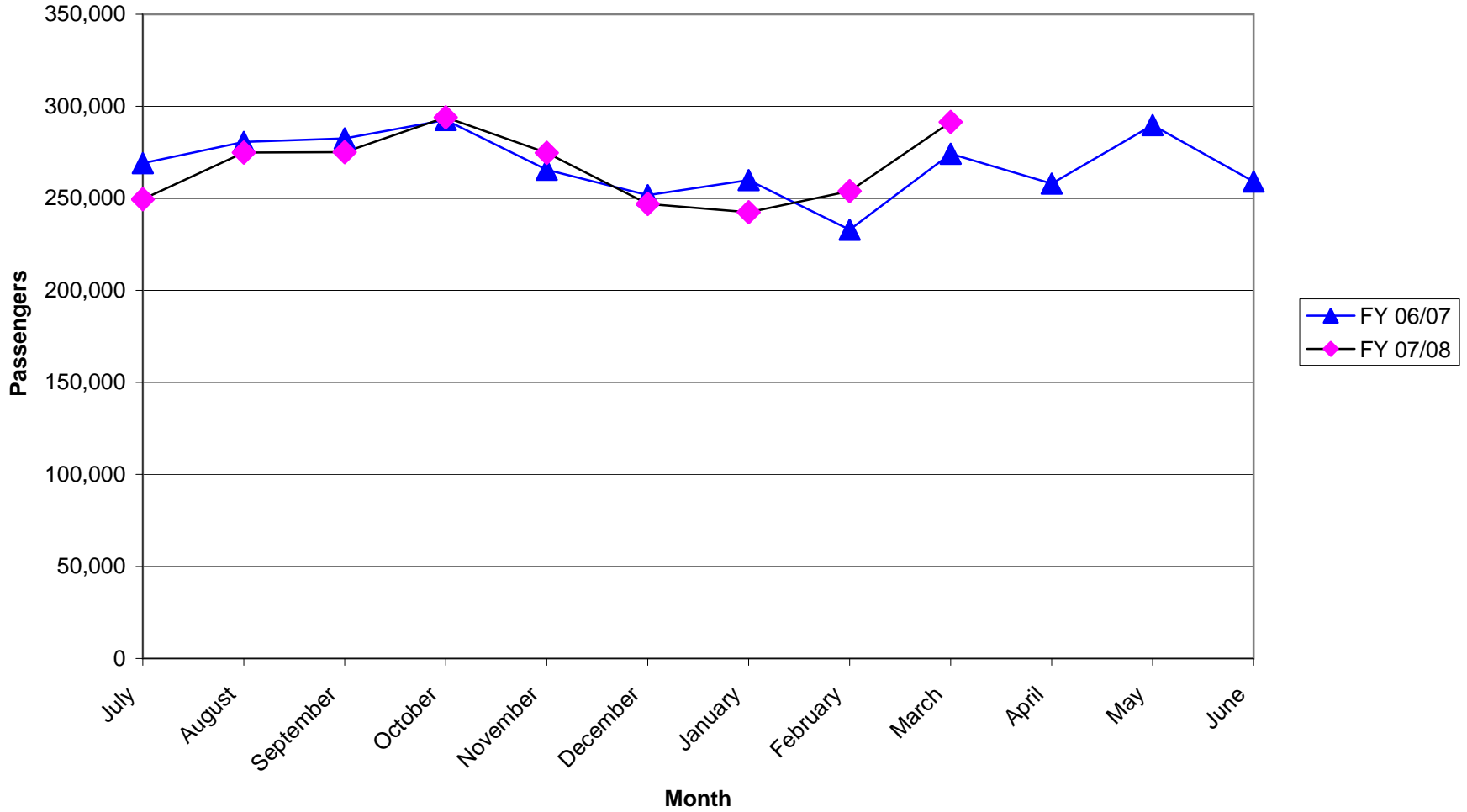
Note: Costs do not include Marin Transit administration costs



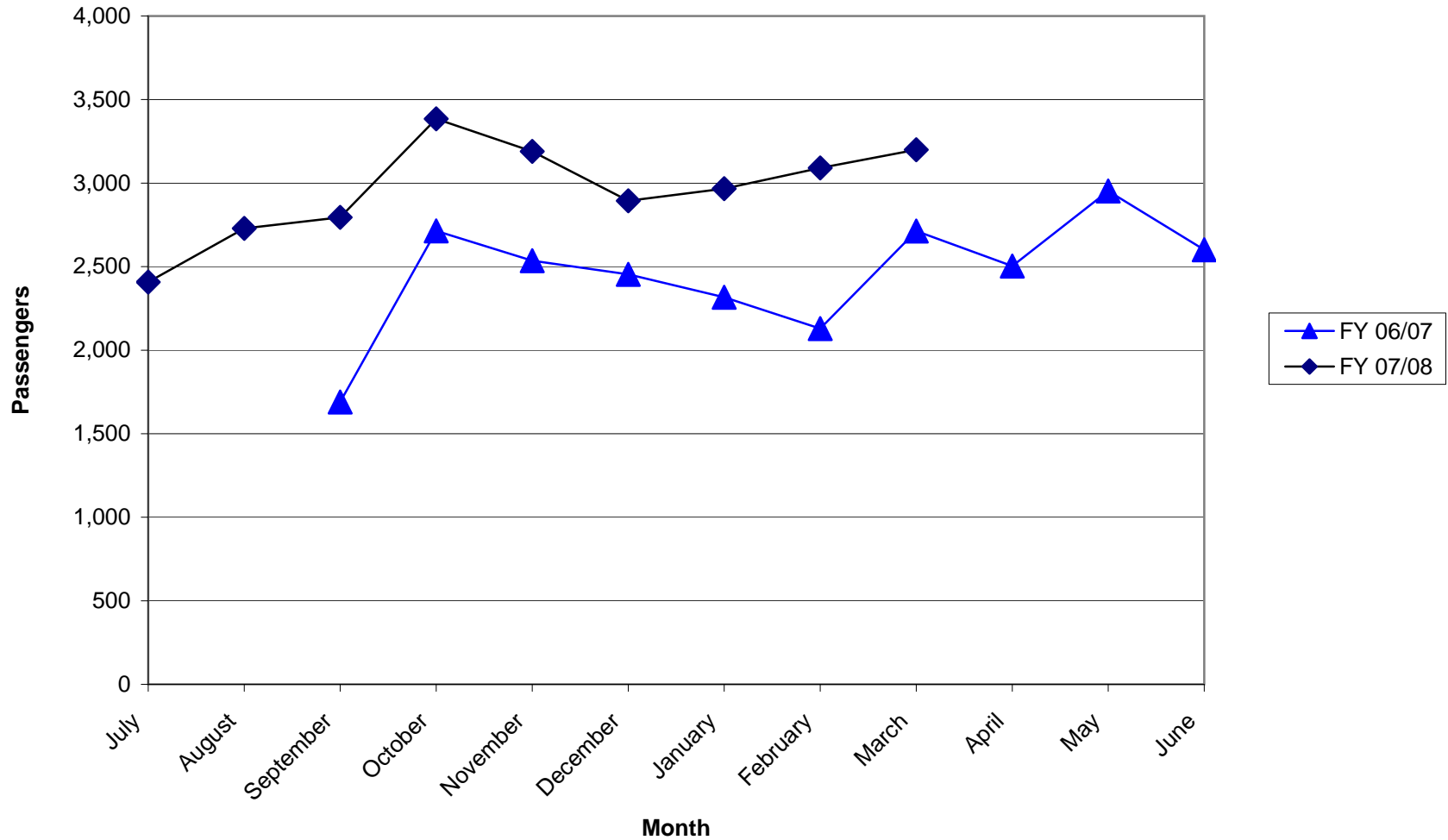
MARIN TRANSIT LOCAL ROUTES

- 17 Marin City – Mill Valley – San Rafael
- 19 Marin City – Tiburon
- 22 San Rafael Transit Center – San Anselmo – Marin City – Sausalito
- 23 Fairfax – San Anselmo – San Rafael
- 29 San Rafael Transit Center – Larkspur – College of Marin – San Anselmo
- 35 Canal – San Rafael Transit Center
- 36 San Rafael Transit Center – Marin City
- 45 Kaiser/Northgate – San Rafael Transit Center
- 49 Novato – Ignacio – Hamilton – Grand – San Rafael Transit Center
- 51 Novato local (San Marin – Novato – Vintage Oaks – IVC – Ignacio)
- 52 Novato (Novato – Ignacio – San Rafael)
- 61 West Marin Stagecoach (Marin City – Mill Valley - Stinson Beach – Bolinas)
- 62 West Marin Stagecoach (Stinson Beach – Bolinas – Pt. Reyes Station)
- 68 West Marin Stagecoach (San Rafael Transit Center – San Anselmo – Pt. Reyes Station – Inverness)
- 71 Novato – San Rafael Transit Center – Marin City
- 107 Sausalito – Tiburon - Mill Valley
- 113 Redwood High School - Paradise Cay
- 115 Redwood High School - Tiburon
- 117 Neil Cummins / Hall Middle School - San Clemente Park
- 123 White Hill School - 4th & Greenfield
- 125 Lagunitas - San Anselmo Hub via Drake High School
- 126 Sleepy Hollow - San Rafael Transit Center
- 127 White Hill School via Brookside/Manor - Sleepy Hollow
- 139 Terra Linda High School - Lucas Valley
- 143 Sausalito – Strawberry - Tamalpais High School
- 145 Terra Linda - San Rafael Transit Center
- 153 San Marin - Redwood & Grant
- 221 Larkspur – Corte Madera
- 233 Santa Venetia – San Rafael Transit Center
- 259 Marinwood – Terra Linda

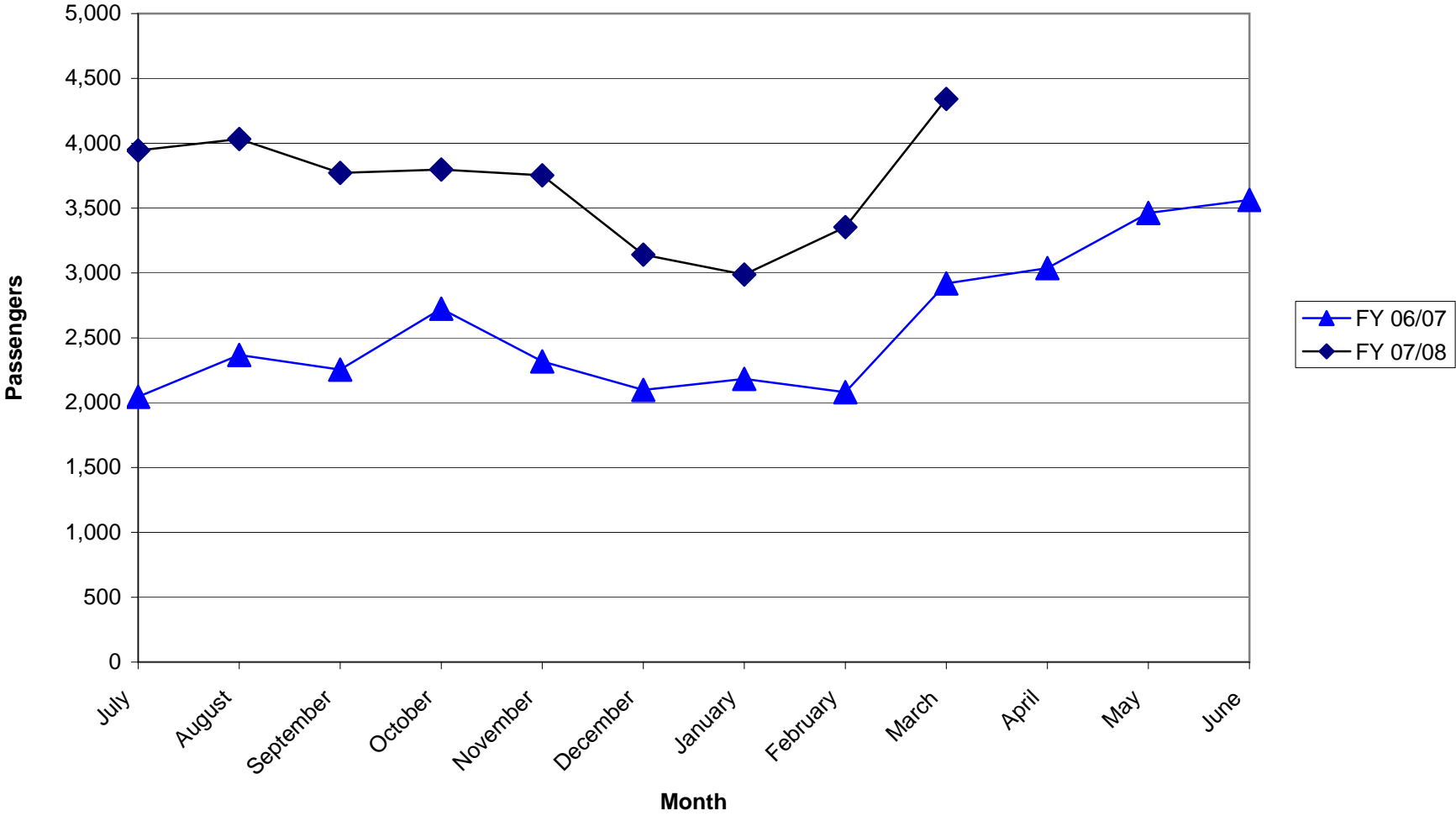
**Local Transit Operated By Golden Gate
Monthly Passengers
Fiscal Years 06/07 & 07/08**



Community Shuttle Passengers Fiscal Years 06/07 & 07/08



**Stagecoach Passengers
Fiscal Years 06/07 & 07/08**



Marin Transit

Monthly Monitoring Report

March 08

YTD

Fixed Route	March								Mar-07			Fiscal Year to Date			
	Service	Patrons	Fares	Contract Expenses	Miles	Hours	Pax/Hour	Farebox Recovery	Subsidy/Pax	Pax/Hour	Farebox Recovery	Subsidy/Pax	Patrons	Pax/Hour	Farebox Recovery
Local Service (GGT) ¹	291,472	\$292,115	\$1,103,590	133,368	9,730	30.0	26.5%	\$2.78	28.7	23.1%	\$3.24	2,403,039	28.4	23.9%	\$3.26
Stage	4,342	\$5,039	\$46,084	15,660	888	4.9	10.9%	\$9.45	4.6	10.2%	\$9.71	33,125	4.8	11.1%	\$9.71
Shuttles	3,200	2,732	27,679	7,649	525	6.1	9.9%	\$7.80	5.4	8.1%	\$9.61	26,659	5.7	8.9%	\$9.13
Total	299,014	\$299,885	\$1,177,353	156,677	11,143	26.8	25.5%	\$2.93	26.2	22.5%	\$3.37	2,462,823	25.6	23.1%	\$3.41

Demand Responsive	March								Mar-07			Fiscal Year to Date			
	Service	Patrons	Fares	Contract Expenses	Miles	Hours	Pax/Hour	Farebox Recovery	Subsidy/Pax	Pax/Hour	Farebox Recovery	Subsidy/Pax	Patrons	Pax/Hour	Farebox Recovery
Paratransit (local)	8,263	\$15,834	\$228,512	60,466	3,752	2.2	6.9%	\$25.74	2.2	6.9%	\$25.61	69,235	2.2	6.6%	\$26.90
EZ Rider	415	\$622	\$10,719	2308	186	2.2	5.8%	\$24.33	2.1	5.4%	\$26.12	3,202	2.1	5.4%	\$26.28
Muir Beach DAR	82	\$116	\$3,401	1,137	81	1.0	3.4%	\$40.06	NA	NA	NA	82	1.0	3.4%	\$40.06

Notes

1. Fares include an estimated \$7741 per month in youth pass sales

Marin Transit

Monthly Monitoring Report Fixed Route Detail Report

March 2008

Route	March					Previous Month			Fiscal Year to Date		
	Patrons	Service Hours	Pax/Hour	Farebox Recovery	Subsidy	Pax/Hour	Farebox Recovery	Subsidy	Pax/Hour	Farebox Recovery	Subsidy
17	21,679	786	27.6	23.9%	\$2.98	26.5	22.6%	\$3.15	26.1	21.5%	\$3.51
19	6,833	537	12.7	11.4%	\$7.43	12.4	10.6%	\$7.70	12.0	10.1%	\$8.61
22	32,075	1,550	20.7	20.3%	\$4.30	20.2	20.0%	\$4.36	19.8	17.9%	\$4.95
23	20,677	936	22.1	18.9%	\$4.06	22.3	19.0%	\$4.03	22.0	17.6%	\$4.46
29	19,199	694	27.7	29.7%	\$2.71	24.3	26.5%	\$3.22	24.4	24.3%	\$3.57
35	73,191	810	90.3	77.5%	\$0.28	82.8	75.7%	\$0.33	84.6	69.9%	\$0.43
36	15,362	402	38.2	43.1%	\$1.71	36.5	43.1%	\$1.79	36.2	38.4%	\$2.10
45	22,844	776	29.4	24.8%	\$2.76	26.0	22.5%	\$3.21	27.4	21.8%	\$3.32
49	15,251	805	19.0	16.9%	\$4.66	18.3	16.7%	\$4.83	18.1	15.1%	\$5.38
51	7,363	583	12.6	12.4%	\$7.38	11.8	11.4%	\$7.99	12.4	10.7%	\$8.25
52	9,447	722	13.1	13.0%	\$7.28	12.3	12.3%	\$7.77	13.2	12.3%	\$7.81
71	19,293	693	27.9	27.7%	\$2.95	25.6	25.9%	\$3.36	28.1	26.0%	\$3.32
Total	263,214	9,293	28.3	26.3%	\$2.85	26.6	25.4%	\$3.07	26.9	23.7%	\$3.34

Not meeting target of 20 passengers per hour

Shuttles

Route	March					Previous Month			Fiscal Year to Date		
	Patrons	Hours	Pax/ Hour	Farebox Recovery	Subsidy	Pax/ Hour	Farebox Recovery	Subsidy	Pax/Hour	Farebox Recovery	Subsidy
221	403	147	2.7	1.6%	\$19.64	3.3	3.0%	\$16.97	2.9	3.0%	\$18.90
233	2,039	189	10.8	18.6%	\$3.92	11.0	18.5%	\$4.24	10.2	16.6%	\$4.60
259	758	189	4.0	7.9%	\$11.93	3.6	6.2%	\$15.76	3.7	6.6%	\$14.94
Total	3,200	525	6.1	9.9%	\$7.80	6.2	9.6%	\$8.55	5.7	8.9%	\$9.13

Not meeting target of 7 passengers per hour

Note: Fuel expenses for shuttles are estimates, fare sponsorship on Route 221 ended in December

Route	March					Previous Month			Fiscal Year to Date		
	Patrons	Hours	Pax/Hour	Farebox Recovery	Subsidy	Pax/Hour	Farebox Recovery	Subsidy	Pax/Hour	Farebox Recovery	Subsidy
61	1,988	402	4.9	12.1%	\$9.28	4.3	9.7%	\$11.01	4.7	11.5%	\$9.85
62	190	111	1.7	4.6%	\$27.57	2.1	4.8%	\$22.34	1.7	4.4%	\$27.35
68	2,164	376	5.8	11.1%	\$8.05	5.7	11.6%	\$8.07	5.9	12.5%	\$7.75
Total	4,342	888	4.9	10.9%	\$9.45	4.6	10.1%	\$10.18	4.8	11.1%	\$9.71

Not meeting target of 4 passengers per hour

School Routes

Route	March					Previous Month			Fiscal Year To Date		
	Patrons	Trips	Pax/ Trip	Farebox Recovery	Subsidy	Pax/Trip	Farebox Recovery	Subsidy	Pax/ Trip	Farebox Recovery	Subsidy
107	697	28	24.9	15.2%	\$3.99	33.4	21.4%	\$2.75	25.4	17.2%	\$4.11
113	1,791	60	29.9	26.1%	\$1.67	20.8	16.8%	\$2.71	23.0	19.1%	\$2.46
115	1,735	60	28.9	26.8%	\$2.38	32.8	28.0%	\$2.07	34.5	27.2%	\$2.13
117	3,671	80	45.9	19.3%	\$1.86	42.4	16.4%	\$2.08	37.8	11.0%	\$2.65
123	8,938	280	31.9	17.0%	\$2.43	31.7	15.5%	\$2.50	31.6	14.1%	\$2.74
125	825	40	20.6	20.5%	\$3.34	18.3	16.0%	\$3.99	23.6	19.5%	\$3.16
126	2,823	128	22.1	31.4%	\$1.81	18.9	26.0%	\$2.23	21.4	28.2%	\$2.15
127	4,459	140	31.9	16.0%	\$2.49	34.0	15.3%	\$2.35	32.7	13.6%	\$2.69
139	549	36	15.3	12.1%	\$7.13	15.2	12.1%	\$7.26	20.1	14.3%	\$5.80
143	864	72	12.0	8.0%	\$5.05	14.7	8.8%	\$4.09	14.5	8.4%	\$4.44
145	537	17	31.6	24.4%	\$1.79	37.4	30.0%	\$1.49	39.9	27.1%	\$1.67
153 ¹	1,369	40	34.2	18.9%	\$2.46	26.8	17.3%	\$2.57	30.5	18.9%	\$2.57
Total	28,258	981	28.8	18.9%	\$2.46	28.3	17.3%	\$2.57	29.2	16.5%	\$2.78

Not meeting target of 20 passengers per trip

Notes:

1. Number of Route 153 trips reduced to eliminate deadhead trips from productivity calculation.

Golden Gate Contracted Services

	Customer Comments											
	Missed Trips	Miles Between Accidents	Overloads	On Time Performance*	Commendations	Late or Missed Buses	Scheduling Complaint	Driving	Driver Conduct	Pass-up	Other	Total Comments
Jan-08	288**	32,711	1	94%	0	6	0	4	4	7	0	21
Feb-08	0	20,617	6		2	4	0	1	6	1	1	15
Mar-08	1	33,343	26***		0	5	0	3	5	4	0	17
Apr-08												
May-08												
Jun-08												
Jul-08												
Aug-08												
Sep-08												
Oct-08												
Nov-08												
Dec-08												

* Monitored bimonthly at Marin City, Strawberry, San Anselmo Hub, San Rafael Transit Center, Marin Civic Center and Novato Redwood & Grant. Includes non Marin Transit Routes 70 & 80

** High number of canceled trips due to bridge and Hwy 101 closures from high winds

*** 15 on Route 123 White Hill School that runs multiple buses; 10 on Route 35 in the afternoon which has additional service on Route 29, 35, & 36 within 10 to 15 minutes