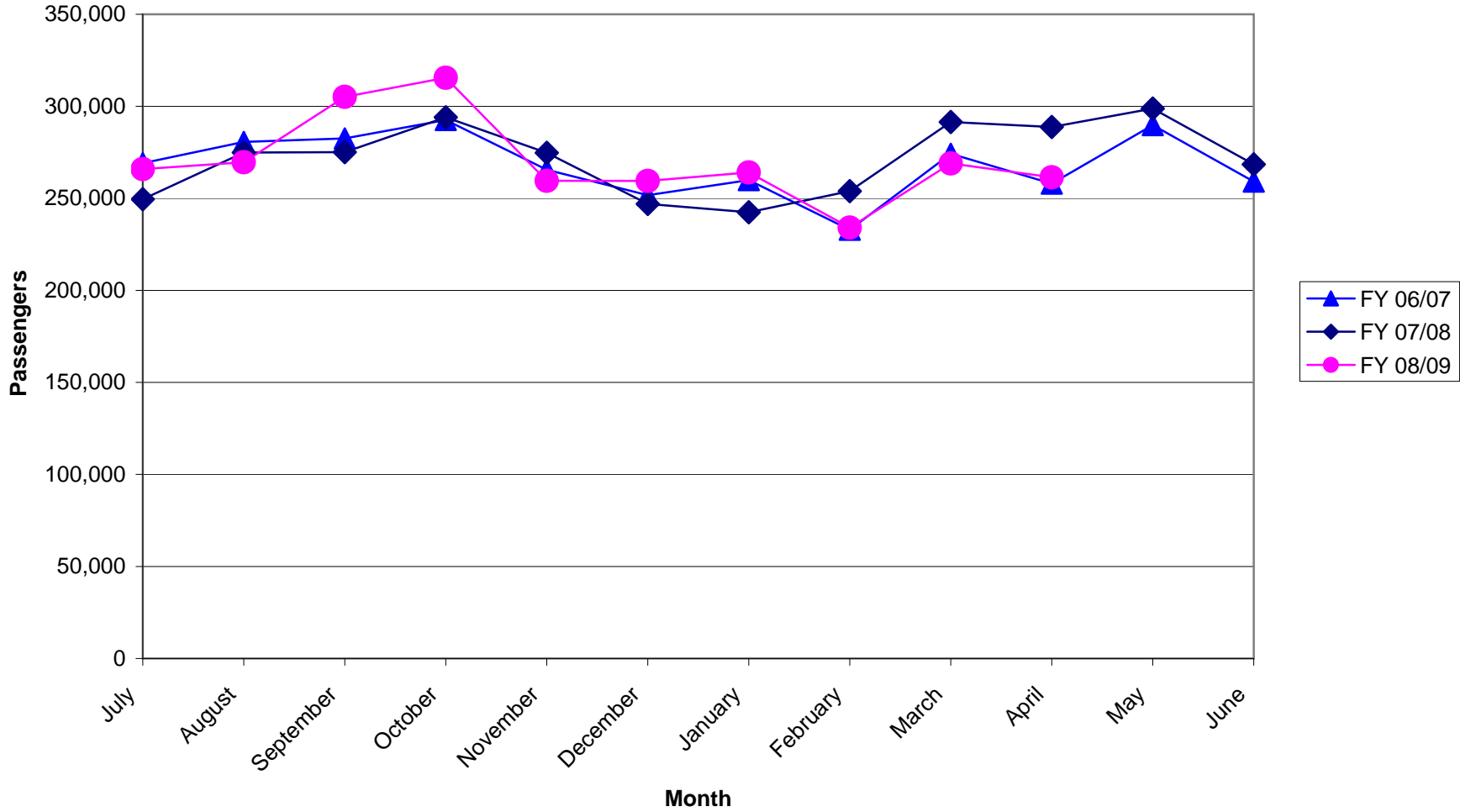


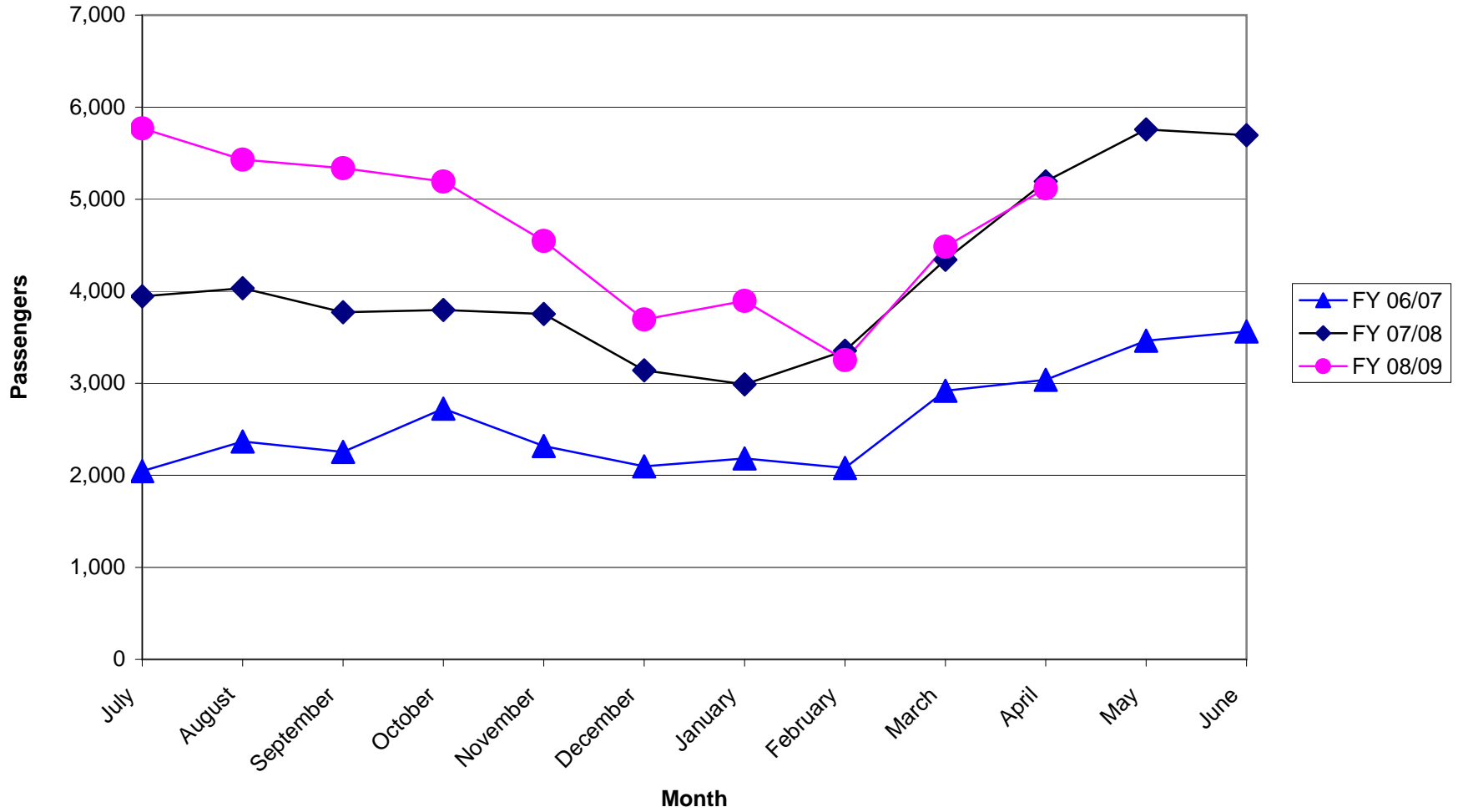
Service Monitoring Report  
Marin County Transit District  
April 2009

Note: Costs do not include Marin Transit administration costs

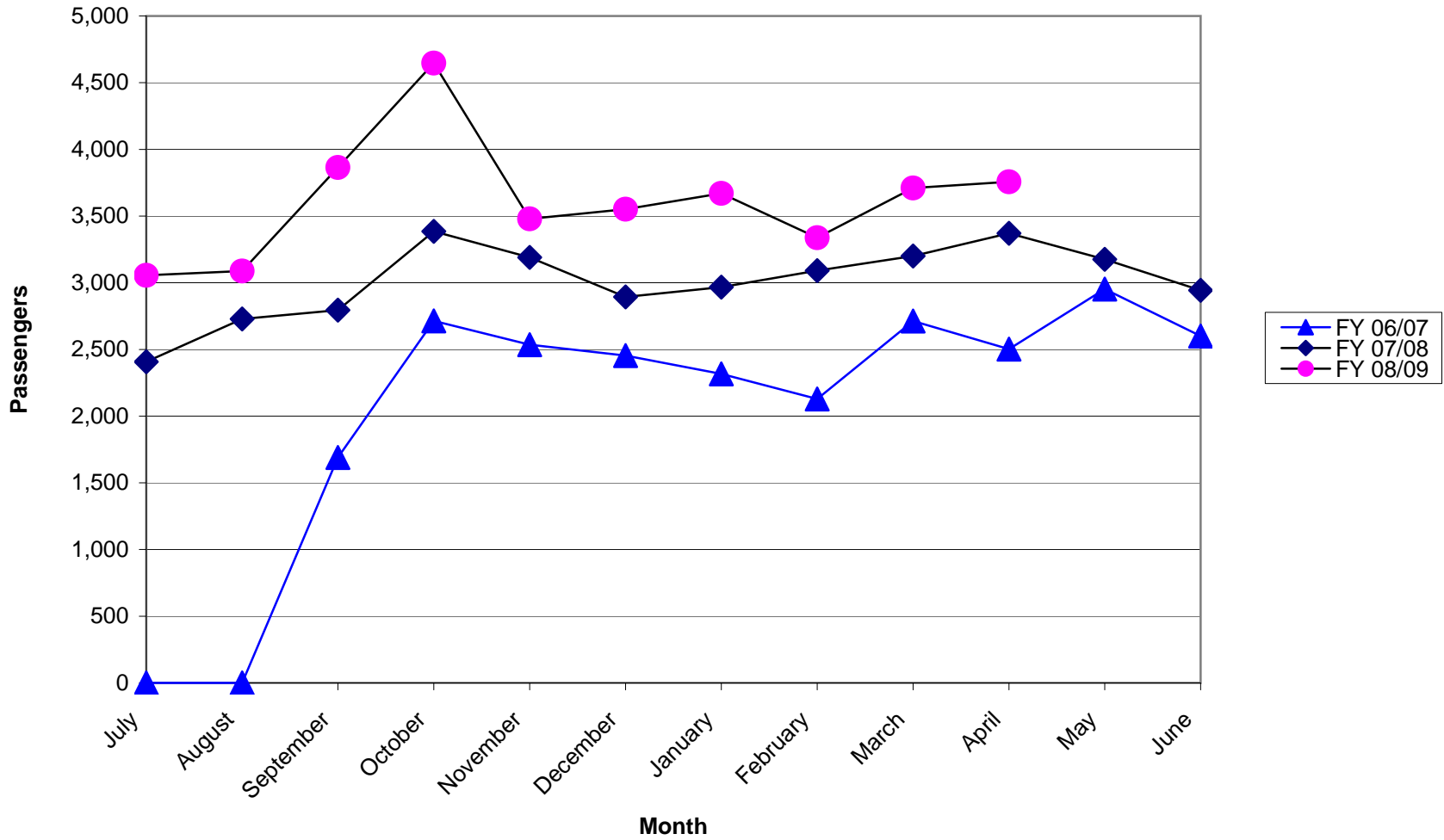
**Local Transit Operated By Golden Gate  
Monthly Passengers  
Fiscal Years 06/07, 07/08, 08/09**



**Stagecoach Passengers**  
**Fiscal Years 06/07, 07/08, 08/09**



### Community Shuttle Passengers Fiscal Years 06/07, 07/08, 08/09



**Marin Transit**  
**Monthly Monitoring Report**

**April 2009**

YTD

Fixed Route	April								Apr-08			Fiscal Year to Date			
	Service	Patrons	Fares	Contract Expenses	Miles	Hours	Pax/Hour	Farebox Recovery	Subsidy/Pax	Pax/Hour	Farebox Recovery	Subsidy/Pax	Patrons	Pax/Hour	Farebox Recovery
Local Service (GGT) <sup>1</sup>	261,441	\$285,972	\$1,260,619	\$144,424	10,646	24.6	22.7%	\$3.73	29.9	26.2%	\$2.79	2,703,735	26.7	23.6%	\$3.36
Stage	5,119	\$6,174	\$53,601	15,852	888	5.8	11.5%	\$9.26	5.8	14.0%	\$8.03	46,721	5.3	10.8%	\$10.30
Shuttles	3,757	\$3,217	38,969	8,844	616	6.1	8.3%	\$9.52	6.1	9.2%	\$9.13	36,161	6.3	8.8%	\$9.43
<b>Total</b>	<b>270,317</b>	<b>\$295,363</b>	<b>\$1,353,190</b>	<b>169,120</b>	<b>12,150</b>	<b>22.2</b>	<b>21.8%</b>	<b>\$3.91</b>	<b>26.8</b>	<b>25.2%</b>	<b>\$2.95</b>	<b>2,786,617</b>	<b>24.0</b>	<b>22.7%</b>	<b>\$3.55</b>

Demand Responsive	April								Apr-08			Fiscal Year to Date			
	Service	Patrons	Fares	Contract Expenses	Miles	Hours	Pax/Hour	Farebox Recovery	Subsidy/Pax	Pax/Hour	Farebox Recovery	Subsidy/Pax	Patrons	Pax/Hour	Farebox Recovery
Paratransit (local)	8,302	\$15,618	\$242,824	65,152	4,016	2.1	6.4%	\$27.37	2.3	7.1%	\$24.71	83,552	2.1	6.5%	\$26.58
EZ Rider	323	\$445	\$9,106	1652	158	2.0	4.9%	\$26.81	2.0	5.0%	\$27.60	3,357	2.0	4.8%	\$27.34
Muir Beach DAR	95	\$128	\$3,056	1,158	73	1.3	4.2%	\$30.82	1.2	3.8%	\$33.18	964	1.4	4.2%	\$28.91

Notes

1. Fares include an estimated \$7741 per month in youth pass sales

# Marin Transit

## Monthly Monitoring Report Fixed Route Detail Report

April 2009

Route	April				Previous Month			Fiscal Year to Date		
	Patrons	Pax/Hour	Farebox Recovery	Subsidy	Pax/Hour	Farebox Recovery	Subsidy	Pax/Hour	Farebox Recovery	Subsidy
17	19,724	18.1	18.5%	\$5.17	17.6	17.4%	\$5.39	23.1	20.9%	\$3.91
19	5,403	10.3	10.8%	\$9.79	10.8	10.1%	\$9.43	12.6	11.0%	\$7.91
22	29,106	18.6	17.6%	\$5.19	19.2	17.9%	\$5.01	19.6	17.6%	\$4.91
23	19,038	16.4	14.5%	\$5.89	16.5	14.5%	\$5.86	16.3	14.6%	\$5.91
29	20,889	22.9	25.1%	\$3.84	22.4	23.9%	\$3.99	22.9	24.1%	\$3.81
35	55,715	70.3	67.7%	\$0.53	71.0	66.2%	\$0.55	81.9	72.0%	\$0.39
36	13,458	36.7	36.1%	\$2.03	31.6	30.6%	\$2.57	33.6	34.1%	\$2.32
45	18,089	23.1	19.5%	\$3.92	23.7	19.8%	\$3.82	27.4	22.0%	\$3.21
49	13,192	16.8	15.9%	\$5.61	16.5	15.3%	\$5.73	18.3	15.4%	\$5.16
51	7,830	12.6	12.2%	\$7.78	13.7	12.6%	\$7.15	13.3	11.9%	\$7.38
52	9,298	13.2	13.7%	\$7.42	13.4	13.2%	\$7.33	13.4	13.4%	\$7.36
71	24,023	25.0	25.3%	\$3.66	24.2	24.8%	\$3.82	26.6	26.6%	\$3.41
<b>Total</b>	<b>235,765</b>	<b>23.0</b>	<b>22.4%</b>	<b>\$3.89</b>	<b>22.9</b>	<b>21.8%</b>	<b>\$3.93</b>	<b>25.2</b>	<b>23.2%</b>	<b>\$3.48</b>

Not meeting target of 20 passengers per hour

### Shuttles

Route	April				Previous Month			Fiscal Year to Date		
	Patrons	Pax/ Hour	Farebox Recovery	Subsidy	Pax/ Hour	Farebox Recovery	Subsidy	Pax/Hour	Farebox Recovery	Subsidy
221	436	2.8	3.7%	\$21.66	3.7	4.6%	\$16.31	3.2	3.2%	\$19.55
233	2,634	10.0	13.9%	\$5.35	9.5	13.4%	\$5.61	9.9	14.9%	\$5.38
259	687	3.5	4.5%	\$17.79	3.1	3.6%	\$19.86	4.1	6.4%	\$14.83
<b>Total</b>	<b>3,757</b>	<b>6.1</b>	<b>8.3%</b>	<b>\$9.52</b>	<b>6.0</b>	<b>8.0%</b>	<b>\$9.63</b>	<b>6.3</b>	<b>8.8%</b>	<b>\$9.43</b>

Not meeting target of 7 passengers per hour

Note: Fuel expenses for shuttles are estimates

Route	April				Previous Month			Fiscal Year to Date		
	Patrons	Pax/Hour	Farebox Recovery	Subsidy	Pax/Hour	Farebox Recovery	Subsidy	Pax/Hour	Farebox Recovery	Subsidy
61	2,443	6.1	12.1%	\$8.67	4.7	10.9%	\$11.52	5.6	11.7%	\$9.57
62	218	2.0	4.0%	\$29.45	2.3	5.3%	\$24.93	2.4	5.0%	\$24.98
68	2,458	6.5	13.1%	\$8.06	6.0	11.2%	\$8.90	5.9	11.7%	\$9.32
<b>Total</b>	<b>5,119</b>	<b>5.8</b>	<b>11.5%</b>	<b>\$9.26</b>	<b>5.0</b>	<b>10.3%</b>	<b>\$10.91</b>	<b>5.3</b>	<b>10.8%</b>	<b>\$10.30</b>

Not meeting target of 4 passengers per hour

Route	April				Previous Month			Fiscal Year To Date		
	Patrons	Pax/ Trip	Farebox Recovery	Subsidy	Pax/Trip	Farebox Recovery	Subsidy	Pax/ Trip	Farebox Recovery	Subsidy
107	855	25.1	15.4%	\$4.14	27.0	16.9%	\$3.81	28.3	16.7%	\$4.01
113	1,238	23.4	16.8%	\$3.07	23.7	17.6%	\$2.88	24.0	19.9%	\$2.54
115	1,416	27.8	22.6%	\$2.62	28.4	20.7%	\$2.62	32.1	25.0%	\$2.21
117	3,792	55.8	25.1%	\$1.43	55.2	22.7%	\$1.44	50.4	19.8%	\$1.56
123	8,287	33.7	15.3%	\$2.45	32.7	17.0%	\$2.49	32.7	17.0%	\$2.42
125	432	25.4	28.6%	\$2.25	31.5	30.5%	\$1.81	39.6	41.3%	\$1.20
126	2,623	23.8	24.4%	\$2.02	22.2	25.2%	\$2.22	25.2	30.8%	\$1.76
127	4,070	33.4	11.7%	\$2.74	31.4	15.0%	\$2.81	32.4	13.6%	\$2.76
139	639	18.8	18.5%	\$4.07	23.8	21.0%	\$3.11	28.2	21.0%	\$2.89
143	749	22.0	4.8%	\$3.38	17.1	3.3%	\$4.50	23.8	7.2%	\$3.04
145	626	36.8	20.8%	\$1.61	37.4	17.5%	\$1.65	44.5	23.9%	\$1.28
153 <sup>1</sup>	949	27.9	10.0%	\$4.46	24.4	9.2%	\$4.70	27.3	16.1%	\$2.98
<b>Total</b>	<b>25,676</b>	<b>31.3</b>	<b>16.8%</b>	<b>\$2.52</b>	<b>30.7</b>	<b>17.7%</b>	<b>\$2.53</b>	<b>32.0</b>	<b>19.0%</b>	<b>\$2.33</b>

Not meeting target of 20 passengers per trip

### Notes:

1. Number of Route 153 trips reduced to eliminate deadhead trips from productivity calculation.