

Service Monitoring Report
Marin County Transit District
September 2008

Note: Costs do not include Marin Transit administration costs

Marin Transit

Monthly Monitoring Report

September 2008

Fixed Route	September								Sep-07			First Quarter 08/09			
	Service	Patrons	Fares	Contract Expenses	Miles	Service Hours	Pax/Hour	Farebox Recovery	Subsidy/Pax	Pax/Hour	Farebox Recovery	Subsidy/Pax	Patrons	Pax/Hour	Farebox Recovery
Local Service (GGT) ¹	305,111	\$308,050	\$1,162,665	133,215	9,809	31.1	26.5%	\$2.80	30.4	24.5%	\$3.15	840,646	28.9	26.2%	\$2.97
Stage	5,337	\$7,148	\$58,555	15,795	896	6.0	12.2%	\$9.63	5.0	11.2%	\$9.14	16,537	6.0	11.9%	\$9.57
Shuttles	3,864	\$3,246	\$31,848	8,145	561	6.9	10.2%	\$7.40	6.0	9.1%	\$8.87	10,008	6.1	9.3%	\$8.76
Total	314,312	\$318,444	\$1,253,068	157,155	11,266	27.9	25.4%	\$2.97	27.5	23.7%	\$3.29	867,191	25.9	25.1%	\$3.16

Demand Responsive	September								Sep-07			First Quarter 08/09			
	Service	Patrons	Fares	Contract Expenses	Miles	Hours	Pax/Hour	Farebox Recovery	Subsidy/Pax	Pax/Hour	Farebox Recovery	Subsidy/Pax	Patrons	Pax/Hour	Farebox Recovery
Paratransit (local)	8,908	\$16,428	\$239,641	63,081	4,024	2.2	6.9%	\$25.06	2.2	6.5%	\$27.12	25,995	2.2	6.8%	\$25.44
EZ Rider	325	\$426	\$9,624	2,006	167	1.9	4.4%	\$28.30	2.2	5.9%	\$24.72	1,045	2.0	4.8%	\$27.34
Muir Beach DAR	148	\$211	\$4,704	1,645	112	1.3	4.5%	\$30.36	NA	NA	NA	294	1.3	4.2%	\$33.50

Notes

1. Fares include an estimated \$7741 per month in youth pass sales

Marin Transit

Monthly Monitoring Report
Fixed Route Detail Report

September 2008

Route	September					Previous Month			First Quarter 07/08		
	Patrons	Service Hours	Pax/Hour	Farebox Recovery	Subsidy	Pax/Hour	Farebox Recovery	Subsidy	Pax/Hour	Farebox Recovery	Subsidy
17	22,539	745	30.3	25.8%	\$2.78	31.0	26%	\$2.70	31.0	26.1%	\$2.70
19	7,250	534	13.6	11.7%	\$7.28	15.4	12%	\$6.40	15.0	12.0%	\$6.56
22	35,432	1,548	22.9	20.6%	\$4.03	20.4	19%	\$4.64	20.6	18.7%	\$4.58
23	19,959	1,128	17.7	15.6%	\$5.38	16.1	15%	\$5.94	16.6	15.3%	\$5.76
29	17,458	675	25.9	27.9%	\$3.15	25.7	27%	\$3.19	25.8	27.5%	\$3.18
35	76,273	790	96.6	83.6%	\$0.19	90.1	82%	\$0.23	93.2	83.1%	\$0.21
36	14,885	408	36.4	36.7%	\$2.07	33.9	35%	\$2.28	35.1	37.1%	\$2.14
45	23,304	756	30.8	24.3%	\$2.77	31.1	25%	\$2.73	31.0	24.5%	\$2.74
49	15,598	782	19.9	16.8%	\$4.66	19.0	16%	\$4.93	19.1	16.5%	\$4.89
51	8,222	586	14.0	12.5%	\$6.96	13.0	12%	\$7.57	13.1	11.9%	\$7.53
52	10,392	682	15.2	15.0%	\$6.37	13.0	14%	\$7.69	13.6	14.2%	\$7.28
71	21,207	740	28.7	29.1%	\$3.03	27.3	28%	\$3.21	27.9	28.3%	\$3.13
Total	272,519	9,372	29.1	26.3%	\$2.90	27.6	25%	\$3.10	28.1	25.7%	\$3.03

Not meeting target of 20 passengers per hour

Shuttles

Route	September					Previous Month			First Quarter 07/08		
	Patrons	Hours	Pax/ Hour	Farebox Recovery	Subsidy	Pax/ Hour	Farebox Recovery	Subsidy	Pax/Hour	Farebox Recovery	Subsidy
221	646	147	4.4	3.8%	\$12.43	2.6	3.0%	\$21.08	2.8	3.0%	\$19.56
233	2,401	225	10.7	17.4%	\$4.48	10.0	16.7%	\$4.61	10.3	16.5%	\$4.53
259	817	189	4.3	8.8%	\$12.00	4.3	8.2%	\$11.86	4.2	8.1%	\$12.12
Total	3,864	561	6.9	10.9%	\$7.40	5.9	8.3%	\$10.17	6.1	9.3%	\$8.76

Not meeting target of 7 passengers per hour

Note: Fuel expenses for shuttles are estimates

Rural	September					Previous Month			First Quarter 07/08		
	Route	Patrons	Hours	Pax/Hour	Farebox Recovery	Subsidy	Pax/Hour	Farebox Recovery	Subsidy	Pax/Hour	Farebox Recovery
61	2,444	407	6.0	13.9%	\$8.96	7.1	12.9%	\$7.79	6.9	14.4%	\$7.61
62	236	111	2.1	4.6%	\$28.19	2.5	5.4%	\$24.54	2.6	5.5%	\$22.58
68	2,657	378	7.0	14.6%	\$7.66	5.5	10.7%	\$10.33	6.0	12.2%	\$9.07
Total	5,337	896	6.0	12.5%	\$9.63	5.9	10.6%	\$10.24	6.0	11.9%	\$9.57

Not meeting target of 4 passengers per hour

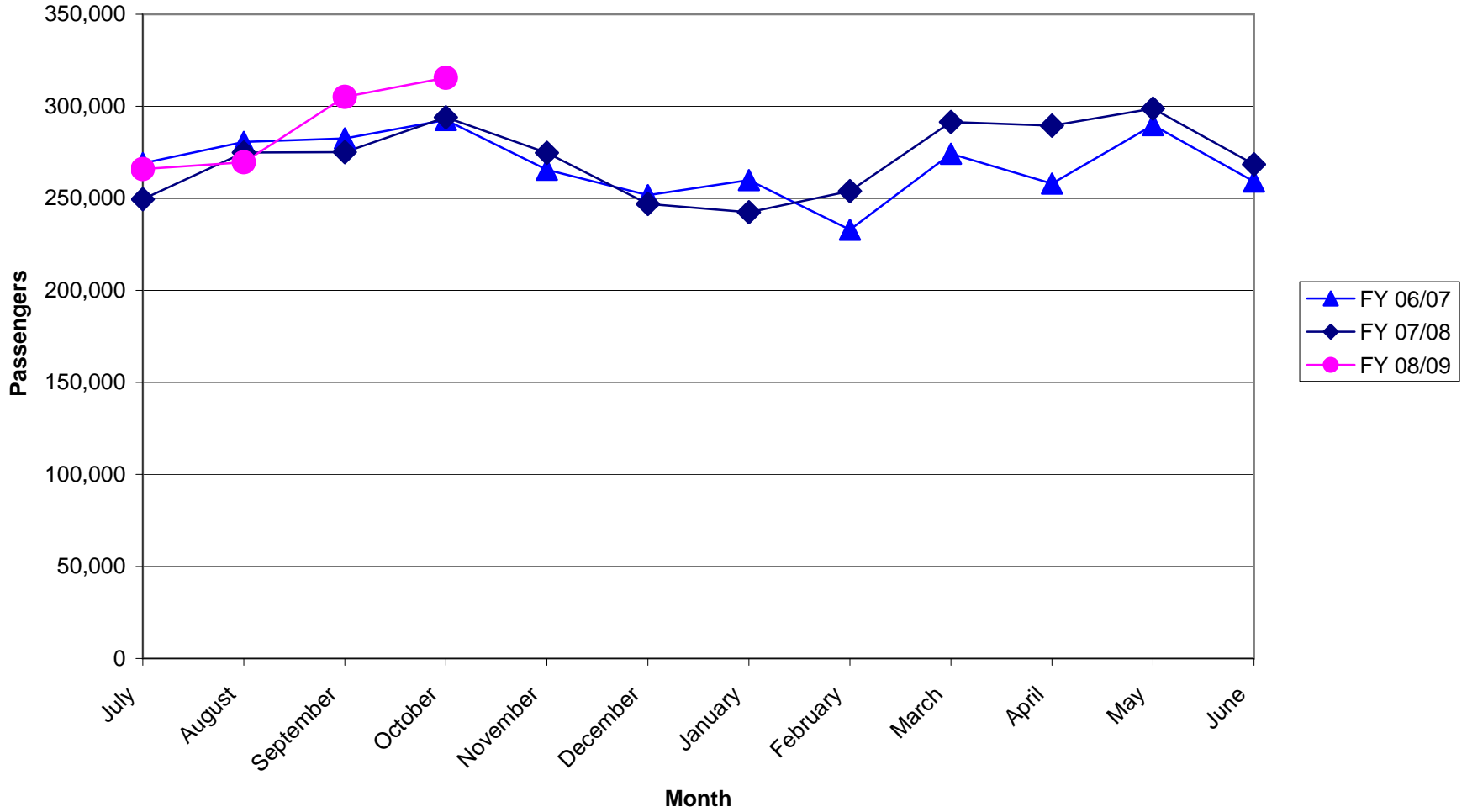
School Routes	September					Previous Month			Fiscal Year To Date		
	Route	Patrons	Trips	Pax/ Trip	Farebox Recovery	Subsidy	Pax/ Trip	Farebox Recovery	Subsidy	Pax/ Trip	Farebox Recovery
107	1,533	42	36.5	19.6%	\$3.24	20.0	9.1%	\$6.62	33.3	17.6%	\$3.63
113	1,573	60	26.2	22.5%	\$2.15	29.0	28.7%	\$1.79	26.8	23.8%	\$2.07
115	1,960	60	32.7	26.8%	\$2.17	34.9	28.5%	\$2.05	33.1	27.2%	\$2.14
117	4,265	86	49.6	11.1%	\$1.82	45.9	10.4%	\$2.19	48.9	10.9%	\$1.88
123	9,608	294	32.7	17.1%	\$2.36	30.2	17.2%	\$2.55	32.2	17.2%	\$2.39
125	739	20	37.0	35.2%	\$1.40	49.6	47.7%	\$0.84	39.5	37.7%	\$1.26
126	3,646	134	27.2	38.3%	\$1.35	20.9	33.6%	\$1.56	26.0	37.5%	\$1.38
127	4,846	147	33.0	15.0%	\$2.67	39.6	17.3%	\$2.16	34.2	15.4%	\$2.56
139	941	38	24.8	17.7%	\$3.89	23.9	16.7%	\$4.47	24.6	17.5%	\$3.99
143	1,098	41	26.8	12.0%	\$2.50	26.2	6.6%	\$2.63	26.7	11.0%	\$2.53
145	898	16	56.1	38.2%	\$0.82	35.7	26.2%	\$1.54	52.9	36.3%	\$0.90
153 ¹	1,485	42	35.4	29.4%	\$1.67	31.0	34.6%	\$1.71	34.5	30.4%	\$1.68
Total	32,592	980	33.3	20.1%	\$2.19	31.6	19.5%	\$2.32	32.9	20.0%	\$2.22

Not meeting target of 20 passengers per trip

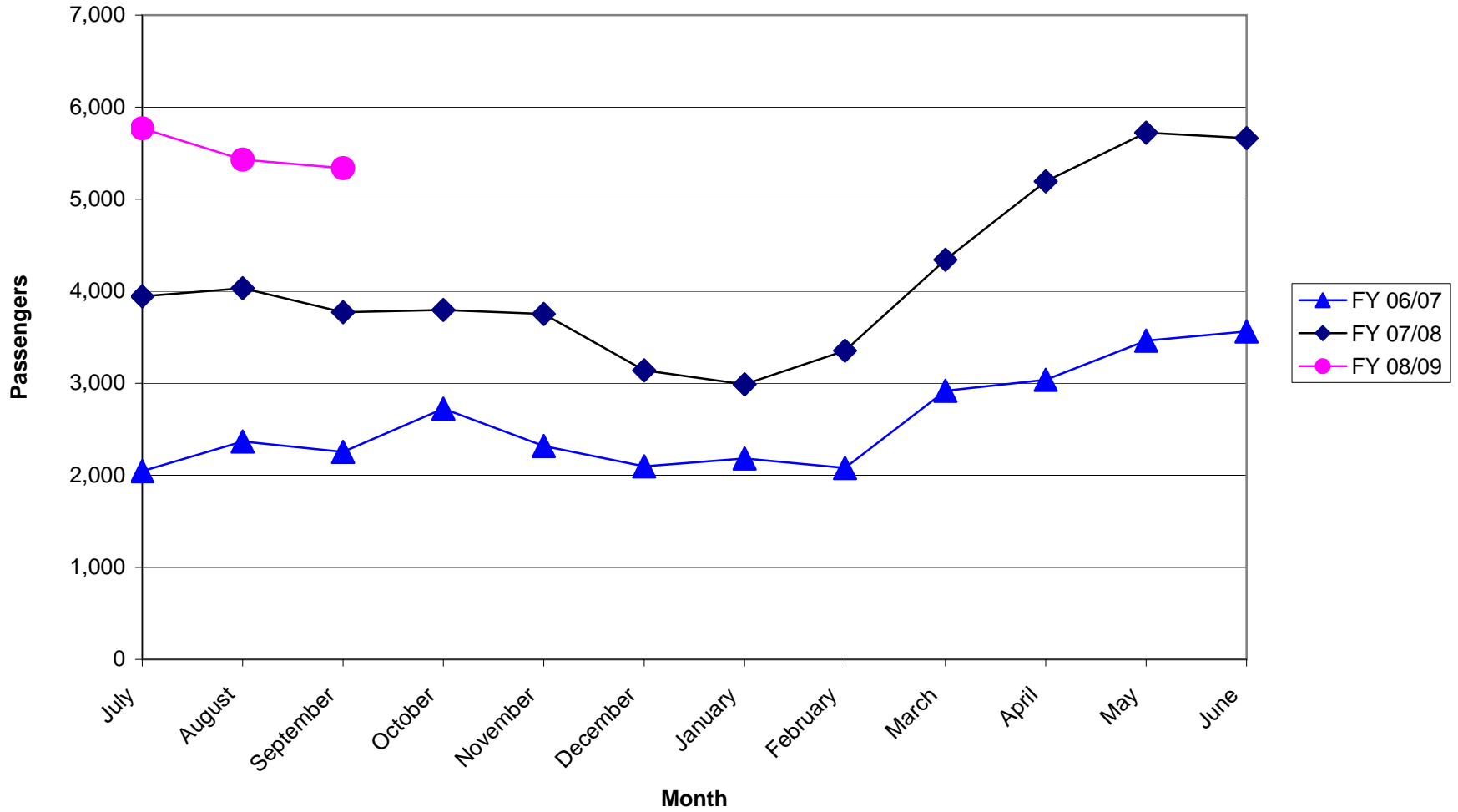
Notes:

1. Number of Route 153 trips reduced to eliminate deadhead trips from productivity calculation.

**Local Transit Operated By Golden Gate
Monthly Passengers
Fiscal Years 06/07, 07/08, 08/09**



Stagecoach Passengers
Fiscal Years 06/07, 07/08, 08/09



Community Shuttle Passengers Fiscal Years 06/07, 07/08, 08/09

