

**Service Monitoring Report
Marin County Transit District
October 2007**

New Service Plan for Shuttles and Local Transit Started September 10, 2006
New Rural Service Started July 1, 2006

Note: Costs do not include Marin Transit administration costs

Marin Transit

Monthly Monitoring Report

October 2007

Fixed Route	October								Oct-06			Fiscal Year to Date ²		
	Service	Patrons	Fares	Contract Expenses	Miles	Hours	Pax/Hour	Farebox Recovery	Subsidy/Pax	Pax/Hour	Farebox Recovery	Subsidy/Pax	Pax/Hour	Farebox Recovery
Local Service (GGT) ¹	294,051	\$299,208	\$1,278,203	129,818	10,035	29.3	23.4%	\$3.33	30.3	24.7%	\$3.01	28.7	23.4%	\$3.34
Stage	3,797	\$5,097	\$41,017	13,985	780	4.9	12.4%	\$9.46	4.2	10.0%	\$10.22	5.0	12.3%	\$9.11
Shuttles	3,385	\$2,793	\$33,366	8,027	575	5.9	8.4%	\$9.03	5.4	13.2%	\$8.71	5.5	8.2%	\$9.67
Total	301,233	\$307,098	\$1,352,586	151,830	11,389	26.4	22.7%	\$3.47	27.6	24.0%	\$3.13	26.2	22.8%	\$3.46

Demand Responsive	October								Oct-06			Fiscal Year to Date		
	Service	Patrons	Fares	Contract Expenses	Miles	Hours	Pax/Hour	Farebox Recovery	Subsidy/Pax	Pax/Hour	Farebox Recovery	Subsidy/Pax	Pax/Hour	Farebox Recovery
Paratransit (local)	8,623	\$16,392	\$233,242	63,064	3,938	2.2	7.0%	\$25.15	2.2	6.6%	\$26.84	2.2	6.8%	\$25.90
EZ Rider	373	\$540	\$9,912	2161	172	2.2	5.5%	\$25.13	3.0	7.8%	\$17.80	2.1	5.6%	\$25.44

Notes

1. Fares include an estimated \$6,629 per month in youth pass sales

Marin Transit

Monthly Monitoring Report Fixed Route Detail Report

October 2007

Route	October					Previous Month			Fiscal Year to Date		
	Patrons	Service Hours	Pax/Hour	Farebox Recovery	Subsidy	Pax/Hour	Farebox Recovery	Subsidy	Pax/Hour	Farebox Recovery	Subsidy
17	20,762	797	26.1	21.6%	\$3.63	26.1	22%	\$3.60	26.0	21.5%	\$3.58
19	6,657	543	12.3	10.2%	\$8.73	12.0	10%	\$8.91	11.8	10.0%	\$8.99
22	32,720	1,575	20.8	19.0%	\$4.83	22.3	19%	\$4.47	20.0	17.6%	\$4.96
23	21,079	973	21.7	17.3%	\$4.69	23.1	18%	\$4.33	22.2	17.6%	\$4.43
29	17,455	726	24.0	23.4%	\$3.79	25.3	24%	\$3.56	24.2	23.2%	\$3.73
35	70,822	831	85.2	67.2%	\$0.48	92.4	73%	\$0.37	85.0	69.6%	\$0.43
36	16,828	429	39.3	39.4%	\$1.96	37.0	38%	\$2.15	34.6	36.2%	\$2.26
45	22,670	808	28.1	21.8%	\$3.35	28.2	22%	\$3.34	27.3	21.2%	\$3.42
49	15,402	818	18.8	15.4%	\$5.33	18.7	15%	\$5.39	18.3	14.8%	\$5.47
51	8,066	638	12.6	10.1%	\$8.46	13.6	12%	\$7.70	13.3	10.7%	\$7.91
52	10,008	714	14.0	12.5%	\$7.74	14.4	13%	\$7.48	14.1	12.9%	\$7.31
71	19,435	678	28.7	26.9%	\$3.30	30.2	27%	\$3.21	28.4	26.1%	\$3.26
Total	261,904	9,531	27.5	23.6%	\$3.40	28.8	25%	\$3.21	27.4	23.5%	\$3.34

Not meeting target of 20 passengers per hour

Shuttles

Route	October					Previous Month			Fiscal Year to Date		
	Patrons	Hours	Pax/ Hour	Farebox Recovery	Subsidy	Pax/ Hour	Farebox Recovery	Subsidy	Pax/Hour	Farebox Recovery	Subsidy
221	483	161	3.0	3.2%	\$18.52	3.3	4.0%	\$16.82	2.7	3.3%	\$20.57
233	2,151	207	10.4	14.7%	\$4.67	10.2	15.2%	\$4.81	10.1	15.8%	\$4.78
259	751	207	3.6	6.2%	\$15.43	4.1	7.5%	\$13.49	3.7	6.2%	\$15.37
Total	3,385	575	5.9	8.4%	\$9.03	6.0	9.1%	\$8.87	7.7	8.5%	\$9.72

Not meeting target of 7 passengers per hour

Note: Fuel expenses for shuttles are estimates, fare sponsorship on Route 221 ended in December

Route	October					Previous Month			Fiscal Year to Date		
	Patrons	Hours	Pax/Hour	Farebox Recovery	Subsidy	Pax/Hour	Farebox Recovery	Subsidy	Pax/Hour	Farebox Recovery	Subsidy
61	1,481	347	4.3	11.9%	\$10.77	5.3	12.0%	\$8.72	5.2	13.0%	\$8.71
62	145	102	1.4	4.2%	\$33.49	1.5	3.9%	\$32.57	1.7	4.7%	\$27.26
68	2,171	331	6.6	15.0%	\$6.76	6.1	12.3%	\$7.54	6.0	13.0%	\$7.61
Total	3,797	780	4.9	12.4%	\$9.46	5.0	11.2%	\$9.14	5.0	12.1%	\$9.12

Not meeting target of 4 passengers per hour

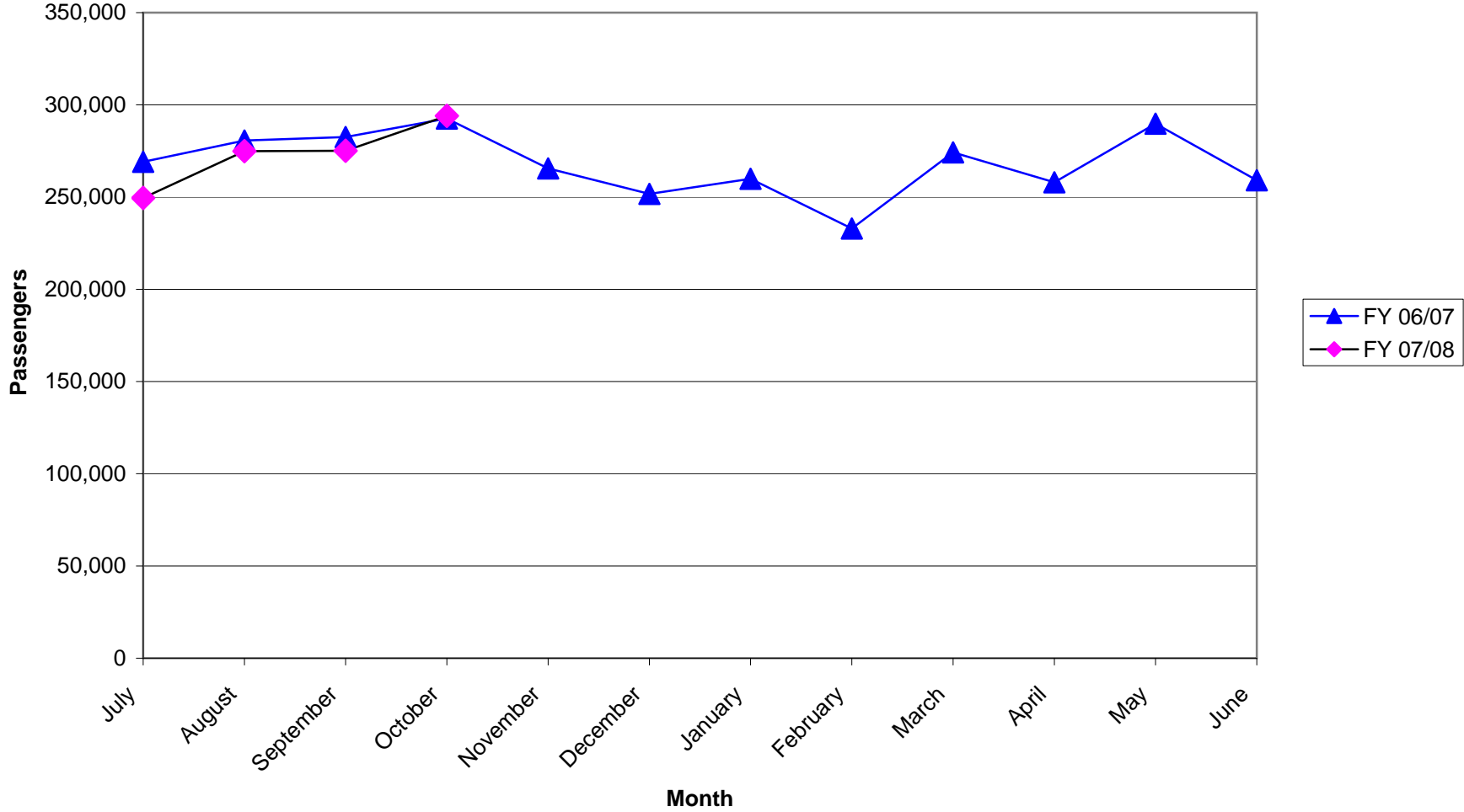
Route	October					Previous Month			Fiscal Year To Date		
	Patrons	Trips	Pax/ Trip	Farebox Recovery	Subsidy	Pax/Hour	Farebox Recovery	Subsidy	Pax/ Trip	Farebox Recovery	Subsidy
107	1,055	44	24.0	18.0%	\$4.47	25.7	17.2%	\$4.21	23.9	16.3%	\$4.58
113	1,261	63	20.0	17.5%	\$2.93	34.6	31.1%	\$1.36	25.5	22.3%	\$2.93
115	2,382	66	36.1	26.0%	\$2.16	34.5	25.2%	\$2.28	35.3	24.7%	\$2.16
117	3,631	96	37.8	7.8%	\$2.78	31.3	5.1%	\$3.52	35.1	6.6%	\$2.78
123	10,293	322	32.0	13.5%	\$2.82	30.9	13.2%	\$2.96	31.6	12.8%	\$2.82
125	1,161	45	25.8	20.2%	\$3.00	25.6	19.1%	\$3.08	25.5	18.8%	\$3.00
126	2,801	129.5	21.6	26.4%	\$2.47	25.1	30.3%	\$2.01	23.4	27.7%	\$2.47
127	5,262	161	32.7	12.5%	\$2.85	34.5	13.0%	\$2.69	34.0	12.4%	\$2.85
139	991	44	22.5	15.4%	\$5.16	21.9	13.1%	\$6.44	20.7	13.4%	\$5.16
143	1,092	79	13.8	6.6%	\$4.97	14.8	6.4%	\$4.59	14.4	6.5%	\$4.97
145	823	22	37.4	25.4%	\$1.78	45.2	27.3%	\$1.60	47.5	25.6%	\$1.78
153 ¹	1,395	46	30.3	15.5%	\$3.04	26.8	15.6%	\$2.81	28.8	17.3%	\$3.04
Total	32,147	1117.5	28.8	15.5%	\$3.04	30.5	15.6%	\$2.81	29.5	15.0%	\$3.04

Not meeting target of 20 passengers per trip

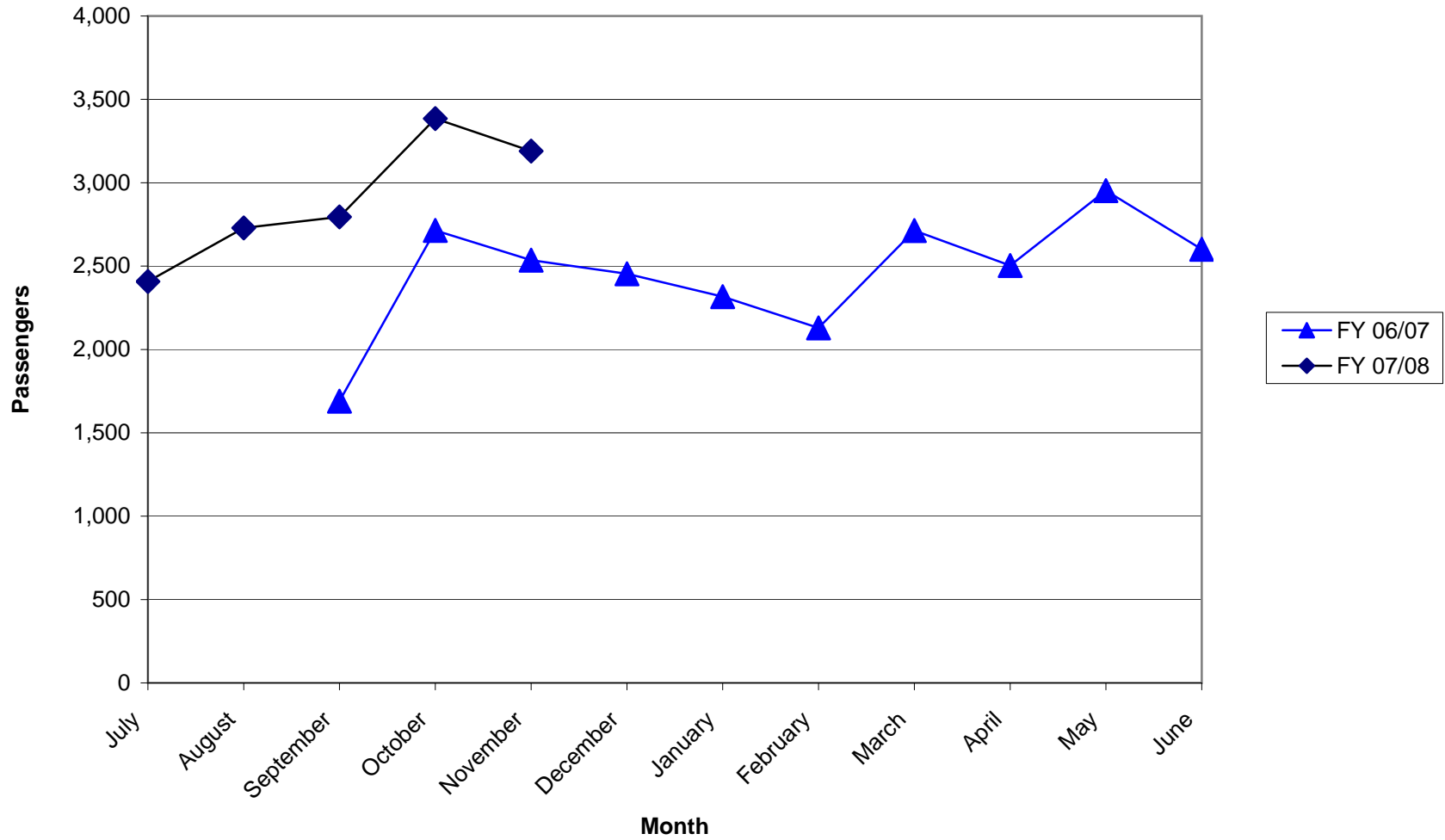
Notes:

1. Number of Route 153 trips reduced to eliminate deadhead trips from productivity calculation.

**Local Transit Operated By Golden Gate
Monthly Passengers
Fiscal Years 06/07 & 07/08**



Community Shuttle Passengers Fiscal Years 06/07 & 07/08



**Stagecoach Passengers
Fiscal Years 06/07 & 07/08**

