

Service Monitoring Report
Marin County Transit District
December 2007

Note: Costs do not include Marin Transit administration costs

Marin Transit
Monthly Monitoring Report

December 2007

Fixed Route	December								Dec-06			Fiscal Year to Date			
	Service	Patrons	Fares	Contract Expenses	Miles	Hours	Pax/Hour	Farebox Recovery	Subsidy/Pax	Pax/Hour	Farebox Recovery	Subsidy/Pax	Patrons	Pax/Hour	Farebox Recovery
Local Service (GGT) ¹	246,952	\$257,641	\$1,180,600	125,868	9,379	26.3	21.8%	\$3.74	27.6	23.3%	\$3.34	1,615,228	28.7	23.3%	\$3.37
Stage	3,141	\$3,564	\$39,321	13,411	743	4.2	9.1%	\$11.38	3.7	8.4%	\$12.36	22,441	4.9	11.5%	\$9.41
Shuttles	2,894	\$2,537	\$25,970	6,980	500	5.8	9.8%	\$8.10	5.3	12.3%	\$9.05	17,401	5.7	8.8%	\$9.32
Total	252,987	\$263,742	\$1,245,891	146,259	10,622	23.8	21.2%	\$3.88	25.2	22.7%	\$3.47	1,655,070	25.9	22.6%	\$3.51

Demand Responsive	December								Dec-06			Fiscal Year to Date			
	Service	Patrons	Fares	Contract Expenses	Miles	Hours	Pax/Hour	Farebox Recovery	Subsidy/Pax	Pax/Hour	Farebox Recovery	Subsidy/Pax	Patrons	Pax/Hour	Farebox Recovery
Paratransit (local)	6,935	\$13,216	\$218,374	54,293	3,379	2.1	6.1%	\$29.58	2.1	11.6%	\$14.62	45,822	2.2	6.6%	\$27.02
EZ Rider	284	\$435	\$9,667	2,058	168	1.7	4.5%	\$32.51	1.8	4.8%	\$29.91	2,117	2.1	5.4%	\$26.31

Notes

1. Fares include an estimated \$6,629 per month in youth pass sales

Marin Transit

Monthly Monitoring Report
Fixed Route Detail Report

December 2007

Route	December					Previous Month			Fiscal Year to Date		
	Patrons	Service Hours	Pax/Hour	Farebox Recovery	Subsidy	Pax/Hour	Farebox Recovery	Subsidy	Pax/Hour	Farebox Recovery	Subsidy
17	19,108	779	24.5	19.3%	\$3.97	25.2	21.1%	\$3.77	26.0	21.1%	\$3.67
19	6,419	539	11.9	9.3%	\$9.08	11.8	9.8%	\$9.10	11.9	9.8%	\$9.03
22	26,548	1,522	17.4	15.5%	\$5.97	20.3	18.0%	\$5.00	20.1	17.3%	\$5.11
23	18,649	905	20.6	16.0%	\$5.04	22.2	17.5%	\$4.57	22.4	17.3%	\$4.55
29	14,975	668	22.4	22.5%	\$4.12	25.4	24.4%	\$3.55	24.3	23.3%	\$3.76
35	61,949	810	76.4	64.0%	\$0.59	84.5	67.9%	\$0.48	85.8	68.4%	\$0.46
36	13,538	388	34.9	37.0%	\$2.31	39.1	41.3%	\$1.91	36.5	37.1%	\$2.21
45	20,230	751	26.9	20.6%	\$3.55	28.7	23.1%	\$3.22	27.8	21.4%	\$3.41
49	13,515	798	16.9	14.0%	\$6.03	17.8	14.4%	\$5.72	18.1	14.6%	\$5.60
51	6,020	555	10.8	9.4%	\$9.93	12.0	10.2%	\$8.87	12.8	10.4%	\$8.33
52	8,114	695	11.7	10.9%	\$9.32	12.9	11.6%	\$8.46	13.8	12.3%	\$7.81
71	16,553	638	25.9	23.5%	\$3.86	30.5	27.6%	\$3.08	29.5	25.9%	\$3.32
Total	225,618	9,048	24.9	21.6%	\$3.85	27.4	23.6%	\$3.41	27.2	23.2%	\$3.43

Not meeting target of 20 passengers per hour

Shuttles

Route	December					Previous Month			Fiscal Year to Date		
	Patrons	Hours	Pax/ Hour	Farebox Recovery	Subsidy	Pax/ Hour	Farebox Recovery	Subsidy	Pax/Hour	Farebox Recovery	Subsidy
221	484	140	3.5	3.9%	\$14.43	3.5	3.8%	\$16.02	3.0	3.4%	\$18.60
233	1,661	180	9.2	15.5%	\$4.76	10.5	16.6%	\$4.57	10.0	15.9%	\$4.75
259	749	180	4.2	8.6%	\$11.41	3.6	6.4%	\$15.83	3.7	6.5%	\$14.81
Total	2,894	500	5.8	9.8%	\$8.10	6.1	9.3%	\$8.84	5.7	8.8%	\$9.32

Not meeting target of 7 passengers per hour

Note: Fuel expenses for shuttles are estimates, fare sponsorship on Route 221 ended in December

Route	December					Previous Month			Fiscal Year to Date		
	Patrons	Hours	Pax/Hour	Farebox Recovery	Subsidy	Pax/Hour	Farebox Recovery	Subsidy	Pax/Hour	Farebox Recovery	Subsidy
61	1,237	335	3.7	7.4%	\$13.07	4.9	11.9%	\$9.37	4.9	11.9%	\$9.36
62	172	102	1.7	4.5%	\$28.15	1.7	3.3%	\$29.10	1.7	4.4%	\$27.68
68	1,732	306	5.7	12.1%	\$8.11	6.7	14.2%	\$6.73	6.0	13.0%	\$7.53
Total	3,141	743	4.2	9.1%	\$11.38	5.2	11.8%	\$8.99	4.9	11.5%	\$9.41

Not meeting target of 4 passengers per hour

School Routes

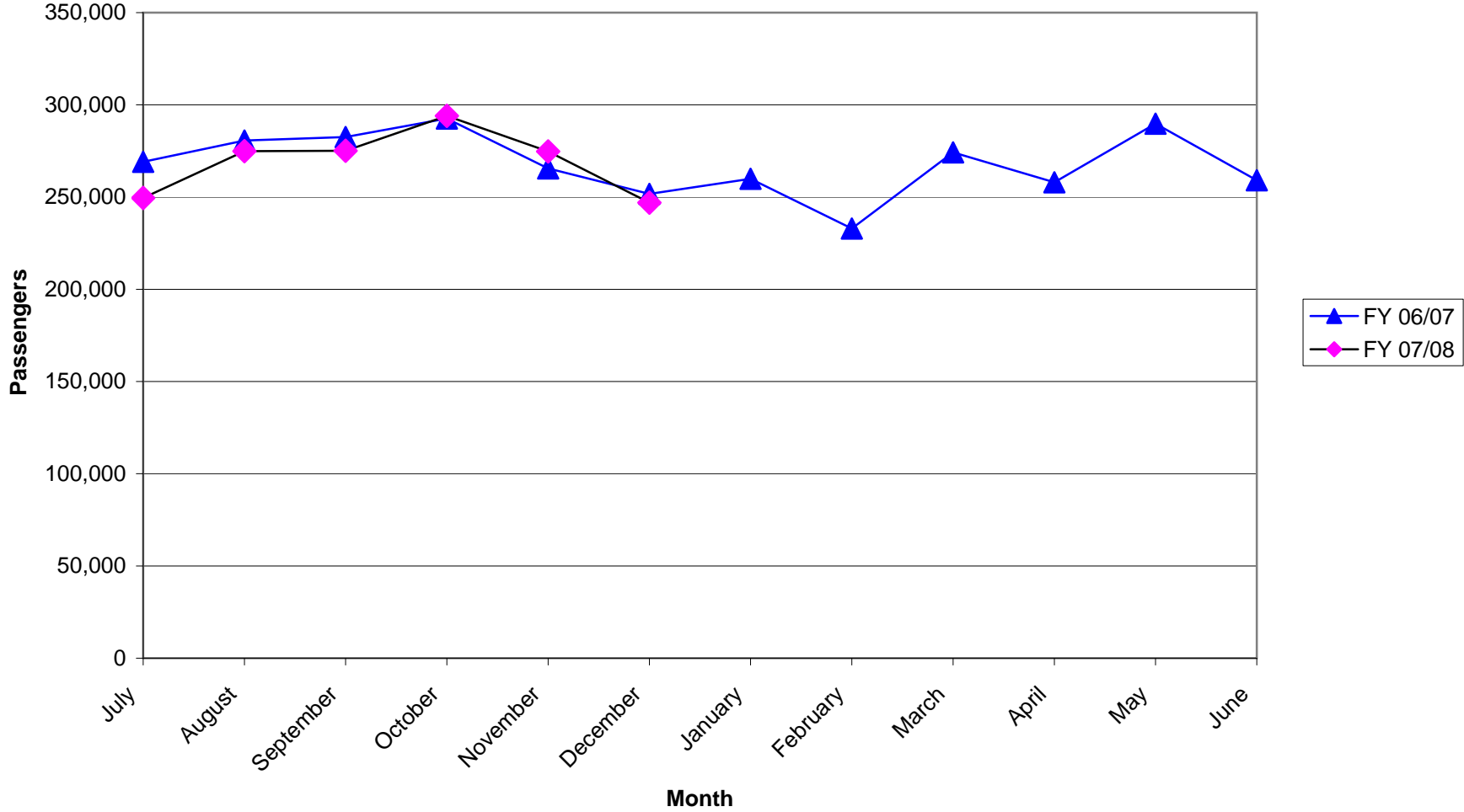
Route	December					Previous Month			Fiscal Year To Date		
	Patrons	Trips	Pax/ Trip	Farebox Recovery	Subsidy	Pax/Hour	Farebox Recovery	Subsidy	Pax/ Trip	Farebox Recovery	Subsidy
107	710	30	23.7	17.5%	\$4.56	25.0	17.8%	\$4.31	24.1	16.9%	\$4.51
113	850	43	19.8	14.0%	\$3.22	17.9	14.5%	\$3.42	22.3	18.5%	\$3.22
115	1,618	46	35.2	27.2%	\$2.19	38.6	28.5%	\$1.95	36.0	26.1%	\$2.19
117	2,344	65	36.1	11.4%	\$2.91	33.5	9.4%	\$3.24	34.8	8.2%	\$2.91
123	6,905	210	32.9	14.3%	\$2.73	30.7	12.5%	\$2.97	31.6	13.0%	\$2.73
125	770	30	25.7	20.2%	\$3.01	25.8	21.0%	\$2.96	25.6	19.6%	\$3.01
126	2,156	100	21.6	26.8%	\$2.12	20.1	29.2%	\$2.24	22.2	27.9%	\$2.12
127	3,183	105	30.3	12.7%	\$3.05	32.8	12.9%	\$2.83	33.1	12.6%	\$3.05
139	490	24	20.4	14.2%	\$5.85	24.5	17.2%	\$4.64	21.6	14.4%	\$5.85
143	922	53	17.4	10.4%	\$3.92	13.9	7.0%	\$4.88	14.8	7.3%	\$3.92
145	349	10	34.9	30.7%	\$1.77	36.5	29.8%	\$1.71	42.6	27.3%	\$1.77
153 ¹	1,037	30	34.6	16.8%	\$2.83	33.5	16.0%	\$2.94	30.9	19.3%	\$2.83
Total	22,371	746	30.0	16.8%	\$2.83	29.3	16.0%	\$2.94	29.5	15.6%	\$2.83

Not meeting target of 20 passengers per trip

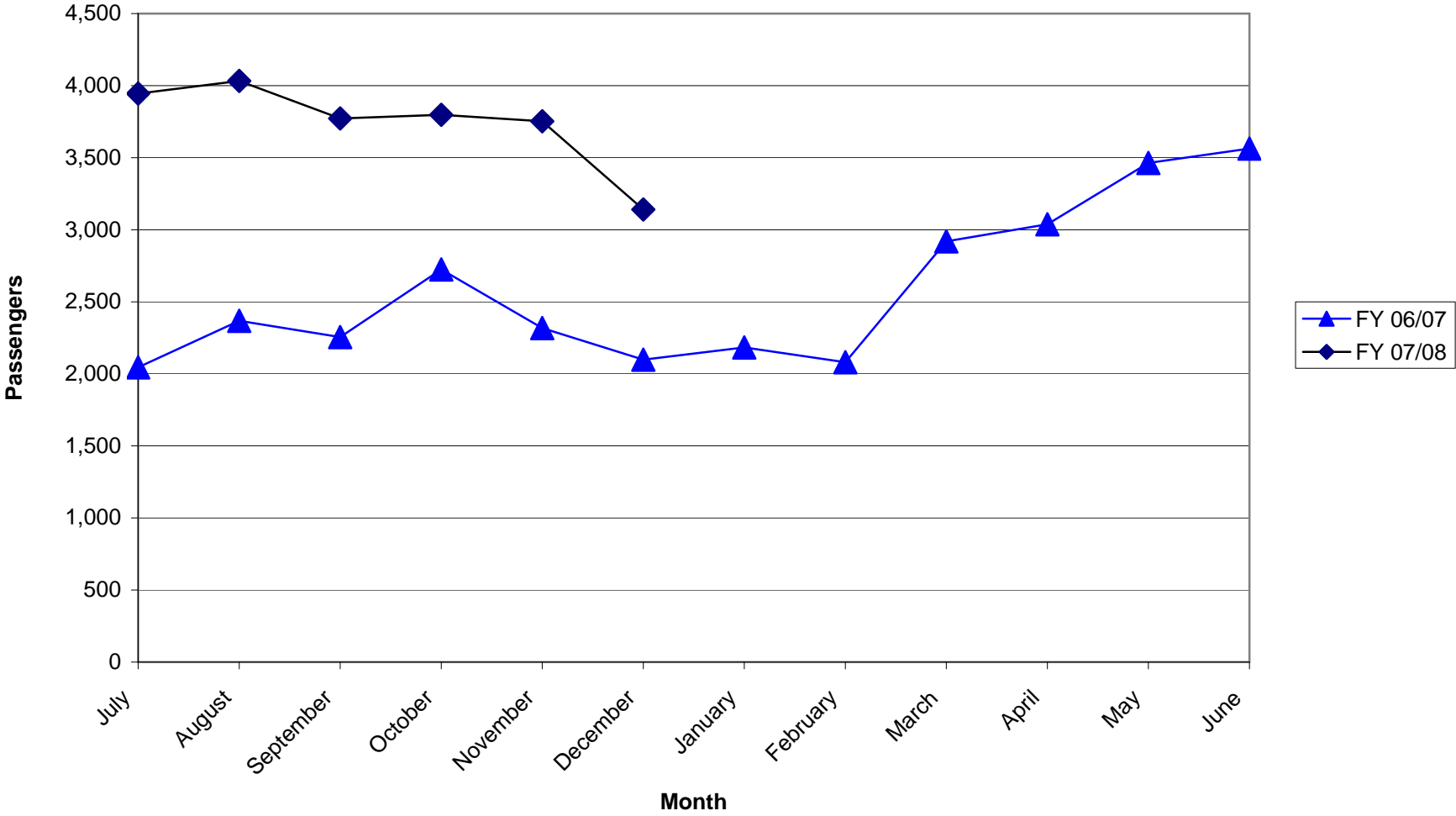
Notes:

1. Number of Route 153 trips reduced to eliminate deadhead trips from productivity calculation.

**Local Transit Operated By Golden Gate
Monthly Passengers
Fiscal Years 06/07 & 07/08**



**Stagecoach Passengers
Fiscal Years 06/07 & 07/08**



Community Shuttle Passengers Fiscal Years 06/07 & 07/08

