



Monthly Monitoring Program Report

December of FY 2011

Fixed Route Service	December 2010								December 2009			FY 2011 To Date			
	Patrons	Fare Revenue	Operating Expense	Revenue Service Miles	Revenue Service Hours	Patrons Per Hour	Farebox Recovery Ratio	Subsidy Per Patron	Patrons Per Hour	Farebox Recovery Ratio	Subsidy Per Patron	Patrons	Patrons Per Hour	Farebox Recovery Ratio	Subsidy Per Patron
Fixed Route Local Service	235,250	\$286,190	\$1,281,695	117,914	9,581	24.6	22.32%	\$4.23	22.9	23.16%	\$4.25	1,554,930	27.1	24.05%	\$3.79
Fixed Route Shuttle Service	3,097	\$2,406	\$40,381	8,274	588	5.3	5.95%	\$12.26	5.5	8.08%	\$11.59	21,488	6.0	7.52%	\$10.68
Fixed Route Stage Service	4,115	\$3,938	\$64,017	16,196	899	4.6	6.15%	\$14.60	3.7	9.46%	\$17.84	31,918	5.8	12.61%	\$10.56

Demand Response Service	December 2010								December 2009			FY 2011 To Date			
	Patrons	Fare Revenue	Operating Expense	Revenue Service Miles	Revenue Service Hours	Patrons Per Hour	Farebox Recovery Ratio	Subsidy Per Patron	Patrons Per Hour	Farebox Recovery Ratio	Subsidy Per Patron	Patrons	Patrons Per Hour	Farebox Recovery Ratio	Subsidy Per Patron
Local Paratransit	8,443	\$15,337	\$298,863	62,495	4,049	2.1	5.13%	\$33.58	2.1	5.06%	\$36.27	53,867	2.2	5.40%	\$32.50
Novato Dial-A-Ride	402	\$466	\$9,859	1,797	141	2.8	4.72%	\$23.37	2.2	5.44%	\$22.55	2,658	2.7	4.99%	\$24.98



Monthly Monitoring Route Report

December of FY 2011

Local Service (Excluding Supplemental School)	December 2010					December 2009			FY 2011 To Date			
	Patrons	Revenue Service Hours	Patrons Per Hour	Farebox Recovery Ratio	Subsidy Per Patron	Patrons Per Hour	Farebox Recovery Ratio	Subsidy Per Patron	Patrons	Patrons Per Hour	Farebox Recovery Ratio	Subsidy Per Patron
17	22,150	1,037	21.4	19.97%	\$4.88	17.6	18.37%	\$5.86	139,066	22.4	20.58%	\$4.64
19	5,370	392	13.7	12.08%	\$8.86	12.1	12.16%	\$9.16	37,276	15.6	13.34%	\$7.82
22	27,915	1,532	18.2	16.58%	\$6.12	15.9	16.61%	\$6.65	200,656	22.0	19.49%	\$4.97
23	16,666	724	23.0	19.75%	\$4.91	19.2	17.18%	\$5.45	105,311	24.3	20.13%	\$4.71
29	18,410	1,018	18.1	17.41%	\$5.73	19.5	22.29%	\$5.05	125,668	20.1	18.80%	\$5.19
35	50,959	801	63.6	59.83%	\$0.82	66.2	69.48%	\$0.58	347,223	72.6	67.05%	\$0.59
36	10,163	330	30.8	27.11%	\$3.27	25.8	29.32%	\$3.47	67,770	34.2	29.61%	\$2.85
45	20,864	716	29.1	27.38%	\$3.23	25.3	22.34%	\$3.89	128,495	29.8	27.54%	\$3.16
49	12,281	762	16.1	15.46%	\$6.66	16.5	15.42%	\$6.50	80,060	17.6	16.61%	\$6.04
51	7,637	587	13.0	12.24%	\$8.73	13.9	12.31%	\$7.96	46,379	13.1	12.03%	\$8.75
52	8,634	640	13.5	12.78%	\$8.31	13.3	14.00%	\$8.18	59,071	15.7	14.56%	\$7.04
71	25,458	924	27.5	23.43%	\$3.98	28.7	33.38%	\$2.94	160,868	30.7	25.02%	\$3.61
Total	226,507	9,463	23.9	21.98%	\$4.32	22.4	22.96%	\$4.36	1,497,843	26.5	23.76%	\$3.85



Monthly Monitoring Route Report

December of FY 2011

Local Service - Supplemental School	December 2010					December 2009			FY 2011 To Date			
	Patrons	Revenue Service Hours	Patrons Per Hour	Farebox Recovery Ratio	Subsidy Per Patron	Patrons Per Hour	Farebox Recovery Ratio	Subsidy Per Patron	Patrons	Patrons Per Hour	Farebox Recovery Ratio	Subsidy Per Patron
113	948	14	69.7	26.74%	\$3.34	50.0	39.07%	\$1.54	5,977	52.7	21.03%	\$4.45
114									2,869	58.3	40.05%	\$1.89
117	2,683	21	130.7	66.11%	\$0.62	103.7	37.10%	\$0.77	16,377	126.0	58.96%	\$0.82
125	380	8	51.0	30.48%	\$2.78	50.7	43.05%	\$1.42	2,440	52.0	32.71%	\$2.43
126	1,791	21	85.8	47.98%	\$1.32	49.6	46.17%	\$1.37	11,258	77.7	46.68%	\$1.35
127	2,658	43	62.1	29.90%	\$2.86	84.1	54.84%	\$0.68	16,296	65.5	30.71%	\$2.66
139	283	13	21.9	15.52%	\$6.63	28.8	4.50%	\$4.20	1,870	21.9	14.51%	\$6.98
Total	8,743	118	74.0	37.53%	\$2.03	67.0	39.32%	\$1.15	57,087	69.7	35.47%	\$2.15

Shuttles	December 2010					December 2009			FY 2011 To Date			
	Patrons	Revenue Service Hours	Patrons Per Hour	Farebox Recovery Ratio	Subsidy Per Patron	Patrons Per Hour	Farebox Recovery Ratio	Subsidy Per Patron	Patrons	Patrons Per Hour	Farebox Recovery Ratio	Subsidy Per Patron
221	284	147	1.9	2.17%	\$34.99	2.2	3.19%	\$30.84	1,649	1.9	2.33%	\$37.01
233	2,254	252	8.9	10.35%	\$6.72	9.0	13.40%	\$6.58	15,959	10.5	13.40%	\$5.62
259	559	189	3.0	3.26%	\$23.05	3.5	5.04%	\$19.17	3,880	3.4	4.07%	\$20.31
Total	3,097	588	5.3	5.95%	\$12.26	5.5	8.08%	\$11.59	21,488	6.0	7.52%	\$10.68



Monthly Monitoring Route Report

December of FY 2011

Stage Service	December 2010					December 2009			FY 2011 To Date			
	Patrons	Revenue Service Hours	Patrons Per Hour	Farebox Recovery Ratio	Subsidy Per Patron	Patrons Per Hour	Farebox Recovery Ratio	Subsidy Per Patron	Patrons	Patrons Per Hour	Farebox Recovery Ratio	Subsidy Per Patron
61	1,404	418	3.4	4.51%	\$20.22	3.3	8.31%	\$20.55	13,070	5.0	11.42%	\$12.28
62	110	69	1.6	2.14%	\$43.72	1.9	4.71%	\$37.68	708	1.6	6.19%	\$40.16
68	2,601	412	6.3	8.47%	\$10.33	4.7	11.97%	\$13.71	18,140	7.2	14.97%	\$8.16
Total	4,115	899	4.6	6.15%	\$14.60	3.7	9.46%	\$17.84	31,918	5.8	12.61%	\$10.56



FY 2011 -- Monthly Performance Charts

Program - Fixed Route Local Service

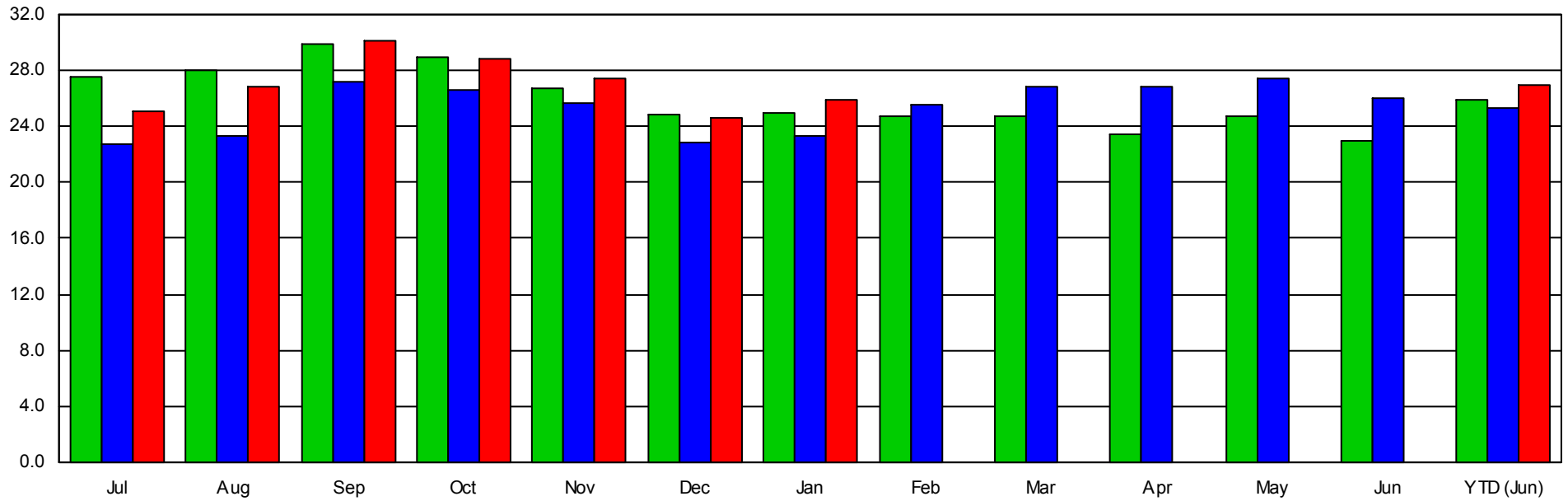
Year-To-Date through June

All Routes

Passengers Per Revenue Hour

Target >= 20.00

Two Years Prior Prior Year Current Year





FY 2011 -- Monthly Performance Charts

Program - Fixed Route Shuttle Service

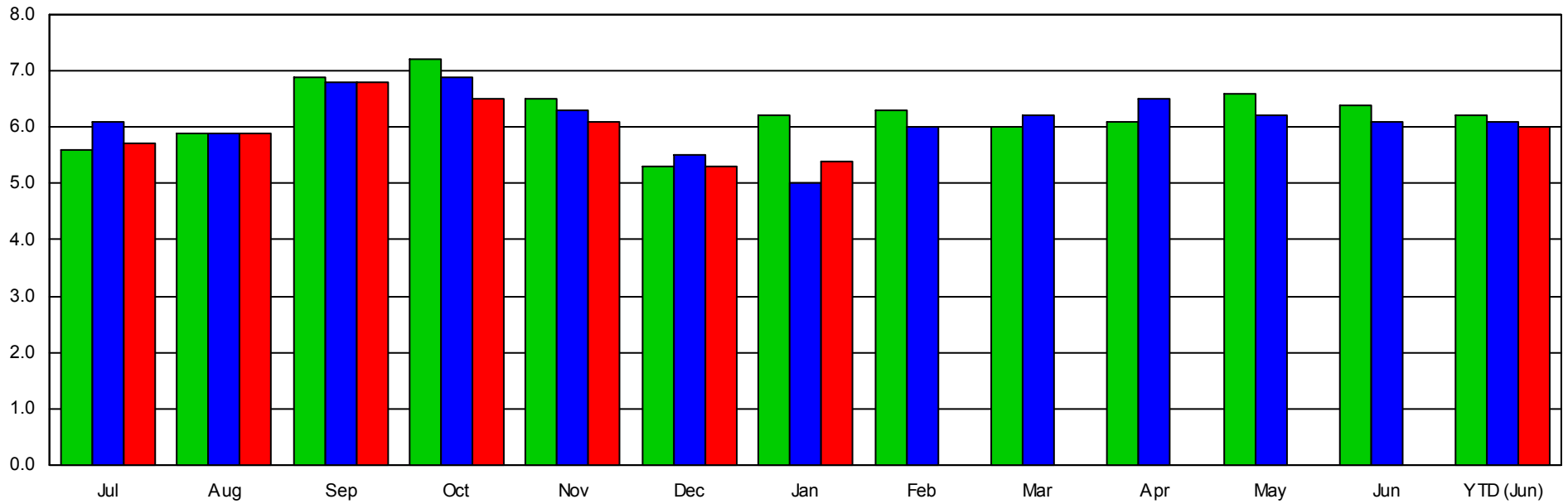
Year-To-Date through June

All Routes

Passengers Per Revenue Hour

Target >= 7.00

Two Years Prior Prior Year Current Year





FY 2011 -- Monthly Performance Charts

Program - Fixed Route Stage Service

Year-To-Date through June

All Routes

Passengers Per Revenue Hour

Target >= 4.00

Two Years Prior Prior Year Current Year

